

# NATURAL/WARM COLOUR PALETTE

# FV COLOUR PALETTE (UPGRADE)

# APARTMENTS .01

## KITCHEN/LIVING

<b>SINK</b>	Above mount stainless steel
<b>SINK MIXER</b>	Mixer tap
<b>COOK TOP</b>	60cm stainless steel (gas)
<b>OVEN</b>	60cm stainless steel oven
<b>RANGEHOOD</b>	60cm stainless steel rangehood
<b>DISHWASHER</b>	Stainless steel dishwasher
<b>SPLASHBACK</b>	Reconstituted stone natural/warm
<b>BENCH TOP</b>	Reconstituted stone natural/warm
<b>JOINERY UNITS</b>	2-Pac
<b>CEILINGS</b>	Painted plasterboard
<b>FLOORING</b>	Selected tile natural/warm
<b>LIGHTING</b>	5-star ESD recessed downlights

## BEDROOMS

<b>FLOORING</b>	Carpet natural/warm
<b>WALLS &amp; CEILINGS</b>	Painted plasterboard
<b>SKIRTINGS &amp; ARCHITRAVES</b>	Painted timber skirtings and architraves
<b>LIGHTING</b>	Selected 5-star recessed downlights
<b>ROBES</b>	Mirrored robes

## BATHROOM

<b>BASIN</b>	Solid surface basin
<b>BASIN MIXER</b>	Single mixer
<b>VANITY CABINETS</b>	Mirror overhead cabinet
<b>JOINERY VANITY</b>	Custom made piece
<b>TOILET SUITE</b>	Freestanding white ceramic
<b>MASTER ENSUITE</b>	Wall mounted shower head
<b>BATHROOM (OTHER)</b>	Wall mounted shower head
<b>SHOWER SCREEN</b>	Semi frameless shower screen to 2100mm
<b>MIRROR</b>	Overhead cabinet mirror
<b>FLOOR &amp; WALL TILE</b>	Natural/warm tile to shower recess and vanity wall to shower screen height
<b>CEILINGS</b>	Painted plasterboard
<b>ADDITIONALS</b>	Toilet roll holder and towel rail Washing machine taps

## GENERAL

<b>WINDOWS</b>	Double glazed
<b>BALCONY</b>	Double sliding doors
<b>TERRACES &amp; BALCONIES</b>	Tile or screed
<b>SECURITY</b>	Audio and video intercom
<b>HEATING &amp; COOLING</b>	Reverse cycle heating and cooling To bedrooms and living zones Condenser unit located on balcony (to most)
<b>CARPARK</b>	Secure garage with internal access

## OPTIONAL UPGRADES

<b>OVEN AND COOK TOP</b>	Miele appliances
<b>DISHWASHER</b>	Miele integrated dishwasher
<b>TAPWARE</b>	Rose Gold
<b>KITCHEN JOINERY</b>	Soft close kitchen joinery LED strip lighting
<b>WINDOW FURNISHINGS</b>	Blinds to bedrooms and living
<b>STORAGE</b>	Oven bonnet storage cage
<b>BATHROOM</b>	LED strip lighting Full height tile
<b>LIVING/KITCHEN FLOOR</b>	Floorboards

## KITCHEN/LIVING

<b>SINK</b>	Undermount stainless steel
<b>SINK MIXER</b>	Rosegold mixer tap
<b>COOK TOP</b>	60cm Miele gas cooktop
<b>OVEN</b>	60cm Miele oven
<b>RANGEHOOD</b>	60cm Miele rangehood
<b>DISHWASHER</b>	Miele integrated dishwasher
<b>SPLASHBACK</b>	Stone with LED strip lighting
<b>BENCH TOP</b>	Stone
<b>JOINERY UNITS</b>	Timber veneer laminate
<b>CEILINGS</b>	Painted plasterboard
<b>FLOORING</b>	Timber flooring

## BEDROOMS

<b>FLOORING</b>	Plush carpet
<b>WALLS &amp; CEILINGS</b>	Painted plasterboard
<b>SKIRTINGS &amp; ARCHITRAVES</b>	Painted timber skirtings and architraves
<b>LIGHTING</b>	Selected low voltage recessed downlights
<b>MASTER ROBES</b>	Mirrored robes
<b>ROBES (OTHER)</b>	Mirrored robes

## BATHROOM

<b>BASIN</b>	Solid surface basin
<b>BASIN MIXER</b>	Rose Gold Mixer
<b>VANITY CABINETS</b>	Mirror overhead cabinet
<b>JOINERY VANITY</b>	Custom design piece with LED strip lighting
<b>TOILET SUITE</b>	Freestanding white ceramic
<b>MASTER ENSUITE</b>	Wall mounted shower head (rose gold finish)
<b>BATHROOM (OTHER)</b>	Wall mounted shower head (rose gold finish)
<b>SHOWER SCREEN</b>	Semi frameless shower screen to 2100mm
<b>MIRROR</b>	Overhead cabinet mirror
<b>FLOOR &amp; WALL TILE</b>	FV tile to shower recess and vanity wall to shower screen height
<b>CEILINGS</b>	Painted plasterboard
<b>ADDITIONAL</b>	Toilet roll holder and towel rail Washing machine taps

## GENERAL

<b>WINDOWS</b>	Double glazed
<b>BALCONY</b>	Double sliding doors
<b>TERRACES &amp; BALCONIES</b>	Tile or screed
<b>SECURITY</b>	Audio and video intercom
<b>HEATING &amp; COOLING</b>	Reverse cycle heating and cooling To bedrooms and living zones Condenser unit located on balcony (to most)
<b>CARPARK</b>	Secure garage with internal access

# FLATIRON

FORTITUDE VALLEY  
BRISBANE

GURNER™

# .01

## 2 BEDROOM / 2 BATHROOM

**TOTAL APARTMENT AREA**      **85m<sup>2</sup>**    **915ft<sup>2</sup>**

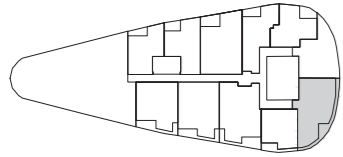
Scale: Not to scale. All dimensions are approximate.

Floorboard upgrade shown.

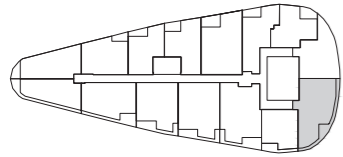
<sup>1</sup> Enclosed Area.

∠ Sliding doors.

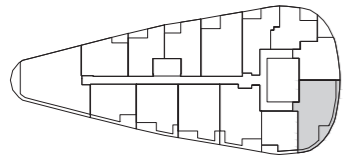
### LEVEL 7



### LEVEL 8-28

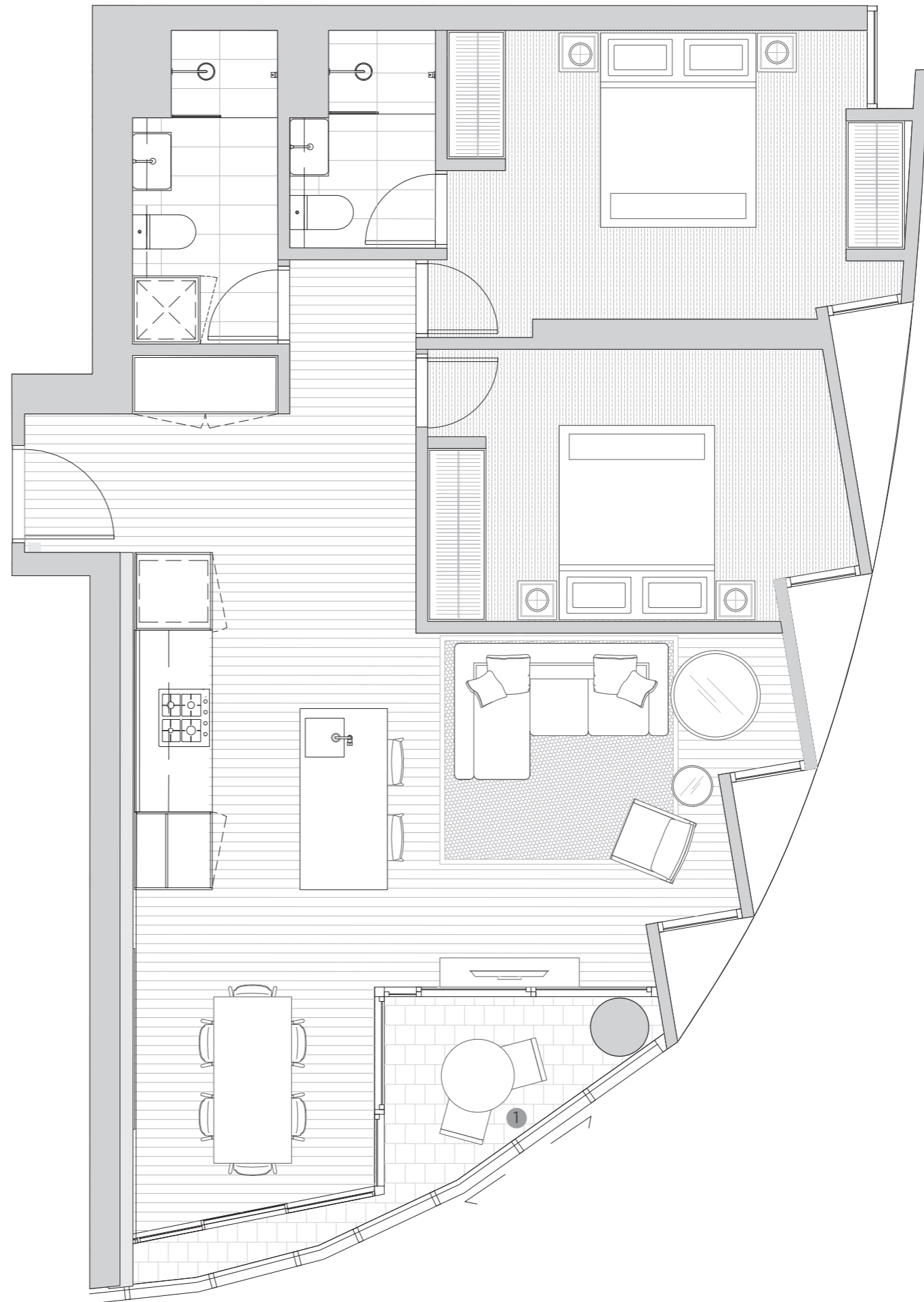


### LEVEL 29-30



## GURNER™

**DISCLAIMER**  
Any dimensions, layout, design features, views, areas, photographs and artist's impressions are for presentation purposes and indicative only. They are also subject to change in accordance with the contract of sale. Furniture and whitegoods are not included in the price. Floorboard upgrade shown. Any dimensions or areas may differ from surveyed areas due to the different methods of measurement. Final product may differ from that described. Purchasers should check the plans and specifications included in the terms of the contract of sale carefully prior to signing the contract.



# NATURAL/WARM COLOUR PALETTE

# FV COLOUR PALETTE (UPGRADE)

# APARTMENTS .02

## KITCHEN/LIVING

<b>SINK</b>	Above mount stainless steel
<b>SINK MIXER</b>	Mixer tap
<b>COOK TOP</b>	60cm stainless steel (gas)
<b>OVEN</b>	60cm stainless steel oven
<b>RANGEHOOD</b>	60cm stainless steel rangehood
<b>DISHWASHER</b>	Stainless steel dishwasher
<b>SPLASHBACK</b>	Reconstituted stone natural/warm
<b>BENCH TOP</b>	Reconstituted stone natural/warm
<b>JOINERY UNITS</b>	2-Pac
<b>CEILINGS</b>	Painted plasterboard
<b>FLOORING</b>	Selected tile natural/warm
<b>LIGHTING</b>	5-star ESD recessed downlights

## BEDROOMS

<b>FLOORING</b>	Carpet natural/warm
<b>WALLS &amp; CEILINGS</b>	Painted plasterboard
<b>SKIRTINGS &amp; ARCHITRAVES</b>	Painted timber skirtings and architraves
<b>LIGHTING</b>	Selected 5-star recessed downlights
<b>ROBES</b>	Mirrored robes

## BATHROOM

<b>BASIN</b>	Solid surface basin
<b>BASIN MIXER</b>	Single mixer
<b>VANITY CABINETS</b>	Mirror overhead cabinet
<b>JOINERY VANITY</b>	Custom made piece
<b>TOILET SUITE</b>	Freestanding white ceramic
<b>MASTER ENSUITE</b>	Wall mounted shower head
<b>BATHROOM (OTHER)</b>	Wall mounted shower head
<b>SHOWER SCREEN</b>	Semi frameless shower screen to 2100mm
<b>MIRROR</b>	Overhead cabinet mirror
<b>FLOOR &amp; WALL TILE</b>	Natural/warm tile to shower recess and vanity wall to shower screen height
<b>CEILINGS</b>	Painted plasterboard
<b>ADDITIONALS</b>	Toilet roll holder and towel rail Washing machine taps

## GENERAL

<b>WINDOWS</b>	Double glazed
<b>BALCONY</b>	Double sliding doors
<b>TERRACES &amp; BALCONIES</b>	Tile or screed
<b>SECURITY</b>	Audio and video intercom
<b>HEATING &amp; COOLING</b>	Reverse cycle heating and cooling To bedrooms and living zones Condenser unit located on balcony (to most)
<b>CARPARK</b>	Secure garage with internal access

## OPTIONAL UPGRADES

<b>OVEN AND COOK TOP</b>	Miele appliances
<b>DISHWASHER</b>	Miele integrated dishwasher
<b>TAPWARE</b>	Rose Gold
<b>KITCHEN JOINERY</b>	Soft close kitchen joinery LED strip lighting
<b>WINDOW FURNISHINGS</b>	Blinds to bedrooms and living
<b>STORAGE</b>	Oven bonnet storage cage
<b>BATHROOM</b>	LED strip lighting Full height tile
<b>LIVING/KITCHEN FLOOR</b>	Floorboards

## KITCHEN/LIVING

<b>SINK</b>	Undermount stainless steel
<b>SINK MIXER</b>	Rosegold mixer tap
<b>COOK TOP</b>	60cm Miele gas cooktop
<b>OVEN</b>	60cm Miele oven
<b>RANGEHOOD</b>	60cm Miele rangehood
<b>DISHWASHER</b>	Miele integrated dishwasher
<b>SPLASHBACK</b>	Stone with LED strip lighting
<b>BENCH TOP</b>	Stone
<b>JOINERY UNITS</b>	Timber veneer laminate
<b>CEILINGS</b>	Painted plasterboard
<b>FLOORING</b>	Timber flooring

## BEDROOMS

<b>FLOORING</b>	Plush carpet
<b>WALLS &amp; CEILINGS</b>	Painted plasterboard
<b>SKIRTINGS &amp; ARCHITRAVES</b>	Painted timber skirtings and architraves
<b>LIGHTING</b>	Selected low voltage recessed downlights
<b>MASTER ROBES</b>	Mirrored robes
<b>ROBES (OTHER)</b>	Mirrored robes

## BATHROOM

<b>BASIN</b>	Solid surface basin
<b>BASIN MIXER</b>	Rose Gold Mixer
<b>VANITY CABINETS</b>	Mirror overhead cabinet
<b>JOINERY VANITY</b>	Custom design piece with LED strip lighting
<b>TOILET SUITE</b>	Freestanding white ceramic
<b>MASTER ENSUITE</b>	Wall mounted shower head (rose gold finish)
<b>BATHROOM (OTHER)</b>	Wall mounted shower head (rose gold finish)
<b>SHOWER SCREEN</b>	Semi frameless shower screen to 2100mm
<b>MIRROR</b>	Overhead cabinet mirror
<b>FLOOR &amp; WALL TILE</b>	FV tile to shower recess and vanity wall to shower screen height
<b>CEILINGS</b>	Painted plasterboard
<b>ADDITIONAL</b>	Toilet roll holder and towel rail Washing machine taps

## GENERAL

<b>WINDOWS</b>	Double glazed
<b>BALCONY</b>	Double sliding doors
<b>TERRACES &amp; BALCONIES</b>	Tile or screed
<b>SECURITY</b>	Audio and video intercom
<b>HEATING &amp; COOLING</b>	Reverse cycle heating and cooling To bedrooms and living zones Condenser unit located on balcony (to most)
<b>CARPARK</b>	Secure garage with internal access

# FLATIRON

FORTITUDE VALLEY  
BRISBANE

GURNER™

# .02

## 1 BEDROOM / 1 BATHROOM PLUS STUDY

TOTAL APARTMENT AREA    50m<sup>2</sup>    538ft<sup>2</sup>

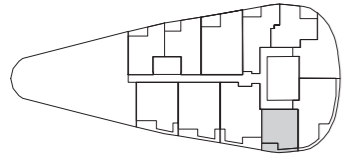
Scale: Not to scale. All dimensions are approximate.

Floorboard upgrade shown.

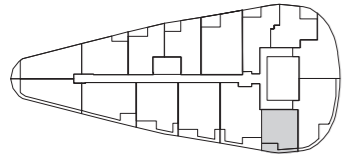
<sup>1</sup> Enclosed Area.

∟ Sliding doors.

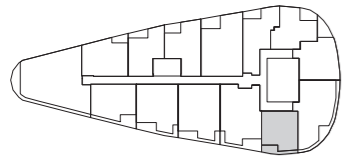
### LEVEL 7



### LEVEL 8-28



### LEVEL 29-30



## GURNER™

**DISCLAIMER**  
Any dimensions, layout, design features, views, areas, photographs and artist's impressions are for presentation purposes and indicative only. They are also subject to change in accordance with the contract of sale. Furniture and whitegoods are not included in the price. Floorboard upgrade shown. Any dimensions or areas may differ from surveyed areas due to the different methods of measurement. Final product may differ from that described. Purchasers should check the plans and specifications included in the terms of the contract of sale carefully prior to signing the contract.

# NATURAL/WARM COLOUR PALETTE

# FV COLOUR PALETTE (UPGRADE)

# APARTMENTS .03

## KITCHEN/LIVING

<b>SINK</b>	Above mount stainless steel
<b>SINK MIXER</b>	Mixer tap
<b>COOK TOP</b>	60cm stainless steel (gas)
<b>OVEN</b>	60cm stainless steel oven
<b>RANGEHOOD</b>	60cm stainless steel rangehood
<b>DISHWASHER</b>	Stainless steel dishwasher
<b>SPLASHBACK</b>	Reconstituted stone natural/warm
<b>BENCH TOP</b>	Reconstituted stone natural/warm
<b>JOINERY UNITS</b>	2-Pac
<b>CEILINGS</b>	Painted plasterboard
<b>FLOORING</b>	Selected tile natural/warm
<b>LIGHTING</b>	5-star ESD recessed downlights

## BEDROOMS

<b>FLOORING</b>	Carpet natural/warm
<b>WALLS &amp; CEILINGS</b>	Painted plasterboard
<b>SKIRTINGS &amp; ARCHITRAVES</b>	Painted timber skirtings and architraves
<b>LIGHTING</b>	Selected 5-star recessed downlights
<b>ROBES</b>	Mirrored robes

## BATHROOM

<b>BASIN</b>	Solid surface basin
<b>BASIN MIXER</b>	Single mixer
<b>VANITY CABINETS</b>	Mirror overhead cabinet
<b>JOINERY VANITY</b>	Custom made piece
<b>TOILET SUITE</b>	Freestanding white ceramic
<b>MASTER ENSUITE</b>	Wall mounted shower head
<b>BATHROOM (OTHER)</b>	Wall mounted shower head
<b>SHOWER SCREEN</b>	Semi frameless shower screen to 2100mm
<b>MIRROR</b>	Overhead cabinet mirror
<b>FLOOR &amp; WALL TILE</b>	Natural/warm tile to shower recess and vanity wall to shower screen height
<b>CEILINGS</b>	Painted plasterboard
<b>ADDITIONALS</b>	Toilet roll holder and towel rail Washing machine taps

## GENERAL

<b>WINDOWS</b>	Double glazed
<b>BALCONY</b>	Double sliding doors
<b>TERRACES &amp; BALCONIES</b>	Tile or screed
<b>SECURITY</b>	Audio and video intercom
<b>HEATING &amp; COOLING</b>	Reverse cycle heating and cooling To bedrooms and living zones Condenser unit located on balcony (to most)
<b>CARPARK</b>	Secure garage with internal access

## OPTIONAL UPGRADES

<b>OVEN AND COOK TOP</b>	Miele appliances
<b>DISHWASHER</b>	Miele integrated dishwasher
<b>TAPWARE</b>	Rose Gold
<b>KITCHEN JOINERY</b>	Soft close kitchen joinery LED strip lighting
<b>WINDOW FURNISHINGS</b>	Blinds to bedrooms and living
<b>STORAGE</b>	Oven bonnet storage cage
<b>BATHROOM</b>	LED strip lighting Full height tile
<b>LIVING/KITCHEN FLOOR</b>	Floorboards

## KITCHEN/LIVING

<b>SINK</b>	Undermount stainless steel
<b>SINK MIXER</b>	Rosegold mixer tap
<b>COOK TOP</b>	60cm Miele gas cooktop
<b>OVEN</b>	60cm Miele oven
<b>RANGEHOOD</b>	60cm Miele rangehood
<b>DISHWASHER</b>	Miele integrated dishwasher
<b>SPLASHBACK</b>	Stone with LED strip lighting
<b>BENCH TOP</b>	Stone
<b>JOINERY UNITS</b>	Timber veneer laminate
<b>CEILINGS</b>	Painted plasterboard
<b>FLOORING</b>	Timber flooring

## BEDROOMS

<b>FLOORING</b>	Plush carpet
<b>WALLS &amp; CEILINGS</b>	Painted plasterboard
<b>SKIRTINGS &amp; ARCHITRAVES</b>	Painted timber skirtings and architraves
<b>LIGHTING</b>	Selected low voltage recessed downlights
<b>MASTER ROBES</b>	Mirrored robes
<b>ROBES (OTHER)</b>	Mirrored robes

## BATHROOM

<b>BASIN</b>	Solid surface basin
<b>BASIN MIXER</b>	Rose Gold Mixer
<b>VANITY CABINETS</b>	Mirror overhead cabinet
<b>JOINERY VANITY</b>	Custom design piece with LED strip lighting
<b>TOILET SUITE</b>	Freestanding white ceramic
<b>MASTER ENSUITE</b>	Wall mounted shower head (rose gold finish)
<b>BATHROOM (OTHER)</b>	Wall mounted shower head (rose gold finish)
<b>SHOWER SCREEN</b>	Semi frameless shower screen to 2100mm
<b>MIRROR</b>	Overhead cabinet mirror
<b>FLOOR &amp; WALL TILE</b>	FV tile to shower recess and vanity wall to shower screen height
<b>CEILINGS</b>	Painted plasterboard
<b>ADDITIONAL</b>	Toilet roll holder and towel rail Washing machine taps

## GENERAL

<b>WINDOWS</b>	Double glazed
<b>BALCONY</b>	Double sliding doors
<b>TERRACES &amp; BALCONIES</b>	Tile or screed
<b>SECURITY</b>	Audio and video intercom
<b>HEATING &amp; COOLING</b>	Reverse cycle heating and cooling To bedrooms and living zones Condenser unit located on balcony (to most)
<b>CARPARK</b>	Secure garage with internal access

# FLATIRON

FORTITUDE VALLEY  
BRISBANE

GURNER™

# .03

## 2 BEDROOM / 2 BATHROOM

TOTAL APARTMENT AREA 81m<sup>2</sup> 872ft<sup>2</sup>

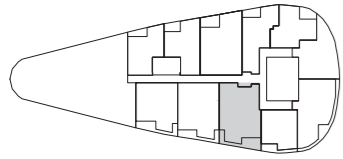
Scale: Not to scale. All dimensions are approximate.

Floorboard upgrade shown.

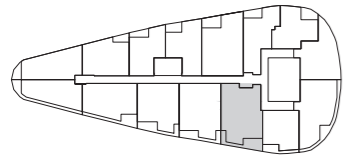
<sup>1</sup> Enclosed Area.

∟ Sliding doors.

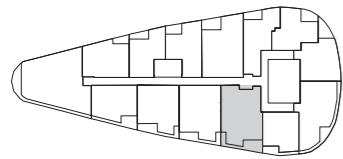
### LEVEL 7



### LEVEL 8-28

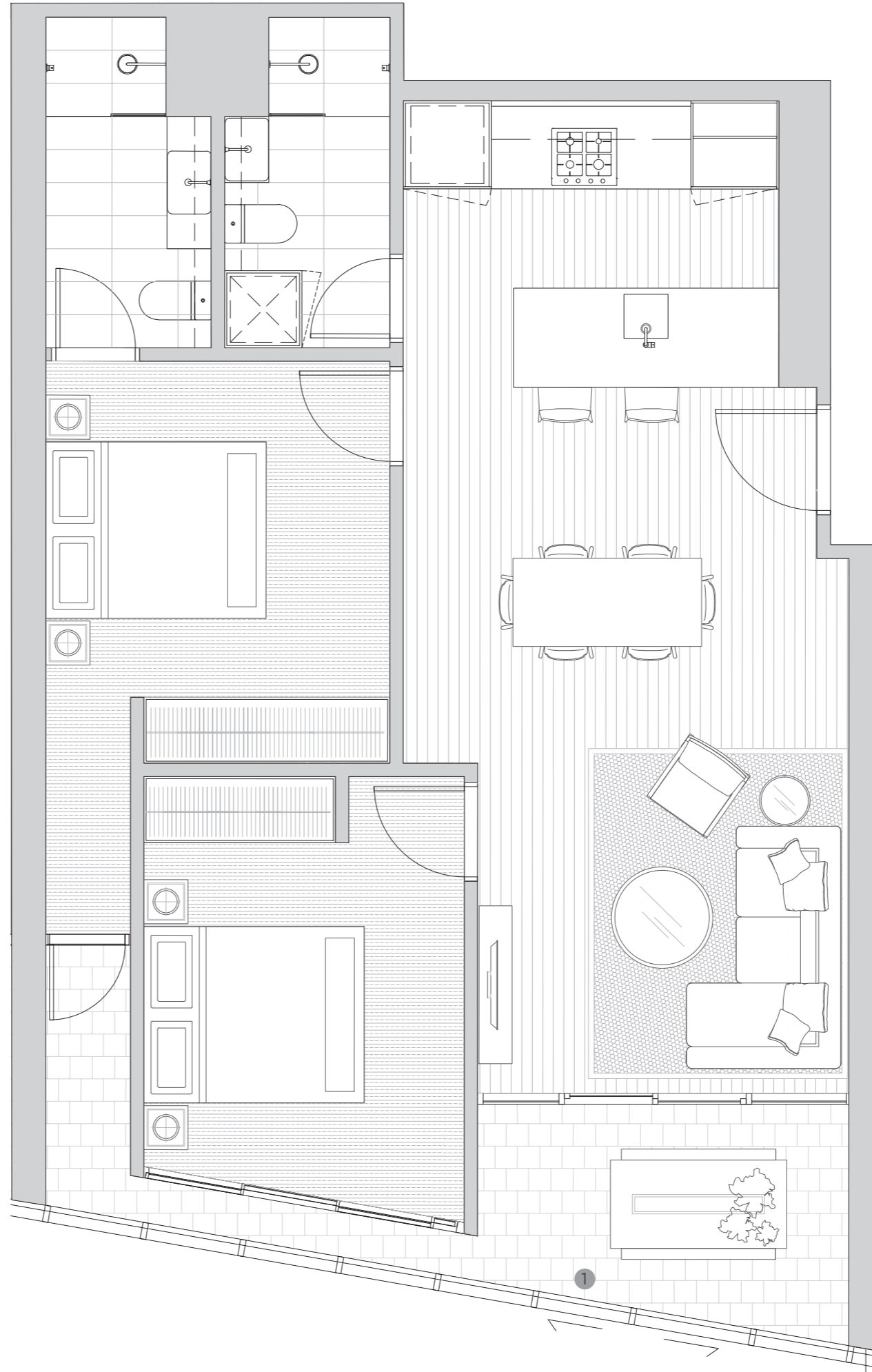


### LEVEL 29-30



## GURNER™

**DISCLAIMER**  
Any dimensions, layout, design features, views, areas, photographs and artist's impressions are for presentation purposes and indicative only. They are also subject to change in accordance with the contract of sale. Furniture and whitegoods are not included in the price. Floorboard upgrade shown. Any dimensions or areas may differ from surveyed areas due to the different methods of measurement. Final product may differ from that described. Purchasers should check the plans and specifications included in the terms of the contract of sale carefully prior to signing the contract.



# NATURAL/WARM COLOUR PALETTE

# FV COLOUR PALETTE (UPGRADE)

# APARTMENTS .04

## KITCHEN/LIVING

<b>SINK</b>	Above mount stainless steel
<b>SINK MIXER</b>	Mixer tap
<b>COOK TOP</b>	60cm stainless steel (gas)
<b>OVEN</b>	60cm stainless steel oven
<b>RANGEHOOD</b>	60cm stainless steel rangehood
<b>DISHWASHER</b>	Stainless steel dishwasher
<b>SPLASHBACK</b>	Reconstituted stone natural/warm
<b>BENCH TOP</b>	Reconstituted stone natural/warm
<b>JOINERY UNITS</b>	2-Pac
<b>CEILINGS</b>	Painted plasterboard
<b>FLOORING</b>	Selected tile natural/warm
<b>LIGHTING</b>	5-star ESD recessed downlights

## BEDROOMS

<b>FLOORING</b>	Carpet natural/warm
<b>WALLS &amp; CEILINGS</b>	Painted plasterboard
<b>SKIRTINGS &amp; ARCHITRAVES</b>	Painted timber skirtings and architraves
<b>LIGHTING</b>	Selected 5-star recessed downlights
<b>ROBES</b>	Mirrored robes

## BATHROOM

<b>BASIN</b>	Solid surface basin
<b>BASIN MIXER</b>	Single mixer
<b>VANITY CABINETS</b>	Mirror overhead cabinet
<b>JOINERY VANITY</b>	Custom made piece
<b>TOILET SUITE</b>	Freestanding white ceramic
<b>MASTER ENSUITE</b>	Wall mounted shower head
<b>BATHROOM (OTHER)</b>	Wall mounted shower head
<b>SHOWER SCREEN</b>	Semi frameless shower screen to 2100mm
<b>MIRROR</b>	Overhead cabinet mirror
<b>FLOOR &amp; WALL TILE</b>	Natural/warm tile to shower recess and vanity wall to shower screen height
<b>CEILINGS</b>	Painted plasterboard
<b>ADDITIONALS</b>	Toilet roll holder and towel rail Washing machine taps

## GENERAL

<b>WINDOWS</b>	Double glazed
<b>BALCONY</b>	Double sliding doors
<b>TERRACES &amp; BALCONIES</b>	Tile or screed
<b>SECURITY</b>	Audio and video intercom
<b>HEATING &amp; COOLING</b>	Reverse cycle heating and cooling To bedrooms and living zones Condenser unit located on balcony (to most)
<b>CARPARK</b>	Secure garage with internal access

## OPTIONAL UPGRADES

<b>OVEN AND COOK TOP</b>	Miele appliances
<b>DISHWASHER</b>	Miele integrated dishwasher
<b>TAPWARE</b>	Rose Gold
<b>KITCHEN JOINERY</b>	Soft close kitchen joinery LED strip lighting
<b>WINDOW FURNISHINGS</b>	Blinds to bedrooms and living
<b>STORAGE</b>	Oven bonnet storage cage
<b>BATHROOM</b>	LED strip lighting Full height tile
<b>LIVING/KITCHEN FLOOR</b>	Floorboards

## KITCHEN/LIVING

<b>SINK</b>	Undermount stainless steel
<b>SINK MIXER</b>	Rosegold mixer tap
<b>COOK TOP</b>	60cm Miele gas cooktop
<b>OVEN</b>	60cm Miele oven
<b>RANGEHOOD</b>	60cm Miele rangehood
<b>DISHWASHER</b>	Miele integrated dishwasher
<b>SPLASHBACK</b>	Stone with LED strip lighting
<b>BENCH TOP</b>	Stone
<b>JOINERY UNITS</b>	Timber veneer laminate
<b>CEILINGS</b>	Painted plasterboard
<b>FLOORING</b>	Timber flooring

## BEDROOMS

<b>FLOORING</b>	Plush carpet
<b>WALLS &amp; CEILINGS</b>	Painted plasterboard
<b>SKIRTINGS &amp; ARCHITRAVES</b>	Painted timber skirtings and architraves
<b>LIGHTING</b>	Selected low voltage recessed downlights
<b>MASTER ROBES</b>	Mirrored robes
<b>ROBES (OTHER)</b>	Mirrored robes

## BATHROOM

<b>BASIN</b>	Solid surface basin
<b>BASIN MIXER</b>	Rose Gold Mixer
<b>VANITY CABINETS</b>	Mirror overhead cabinet
<b>JOINERY VANITY</b>	Custom design piece with LED strip lighting
<b>TOILET SUITE</b>	Freestanding white ceramic
<b>MASTER ENSUITE</b>	Wall mounted shower head (rose gold finish)
<b>BATHROOM (OTHER)</b>	Wall mounted shower head (rose gold finish)
<b>SHOWER SCREEN</b>	Semi frameless shower screen to 2100mm
<b>MIRROR</b>	Overhead cabinet mirror
<b>FLOOR &amp; WALL TILE</b>	FV tile to shower recess and vanity wall to shower screen height
<b>CEILINGS</b>	Painted plasterboard
<b>ADDITIONAL</b>	Toilet roll holder and towel rail Washing machine taps

## GENERAL

<b>WINDOWS</b>	Double glazed
<b>BALCONY</b>	Double sliding doors
<b>TERRACES &amp; BALCONIES</b>	Tile or screed
<b>SECURITY</b>	Audio and video intercom
<b>HEATING &amp; COOLING</b>	Reverse cycle heating and cooling To bedrooms and living zones Condenser unit located on balcony (to most)
<b>CARPARK</b>	Secure garage with internal access

# FLATIRON

FORTITUDE VALLEY  
BRISBANE

GURNER™

# .04

## 2 BEDROOM / 2 BATHROOM

**TOTAL APARTMENT AREA**    **77m<sup>2</sup>**    **829ft<sup>2</sup>**

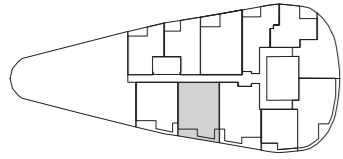
Scale: Not to scale. All dimensions are approximate.

Floorboard upgrade shown.

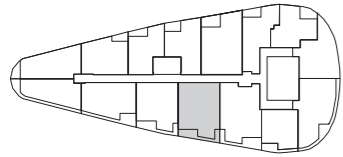
<sup>1</sup> Enclosed Area.

∠ Sliding doors.

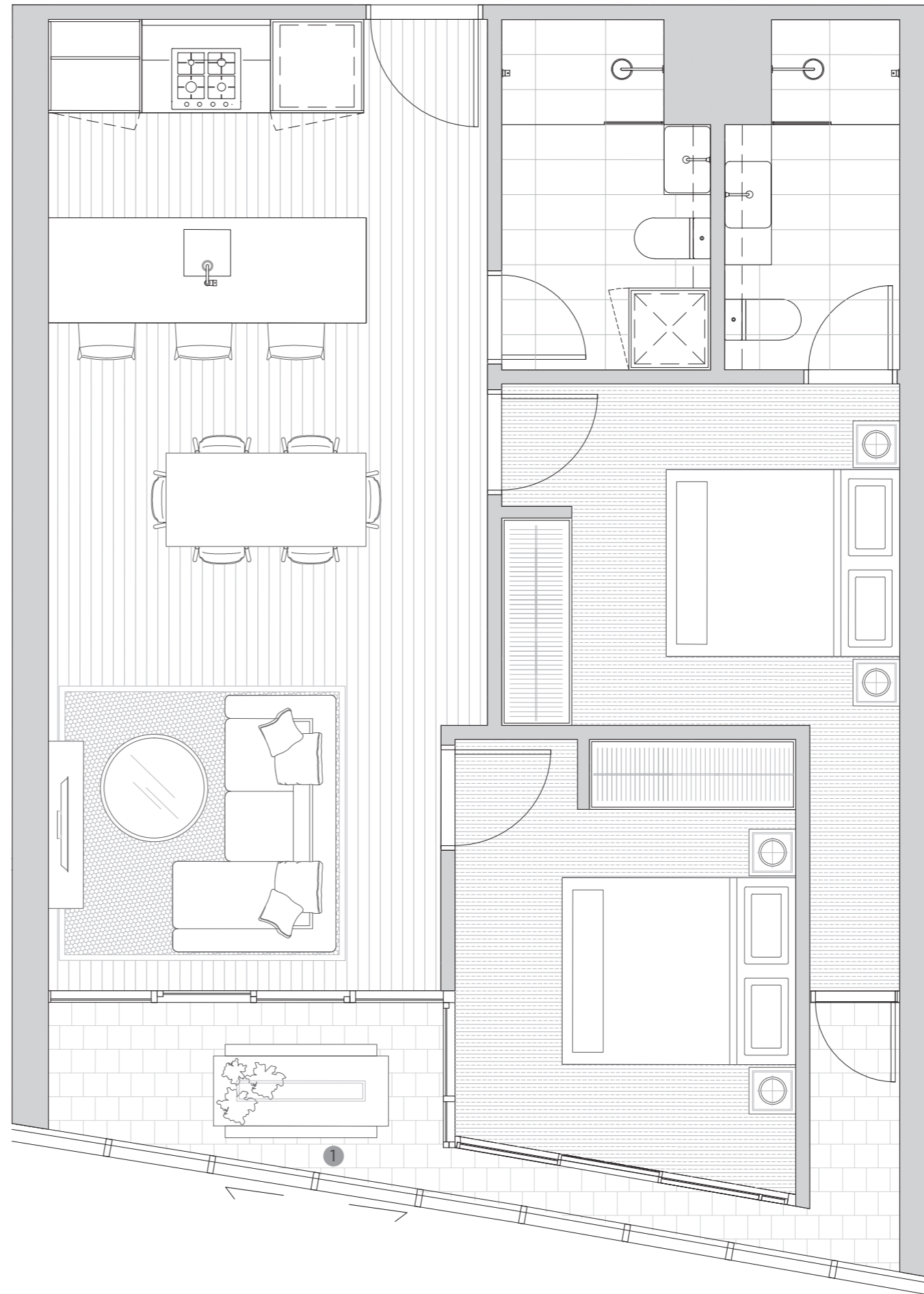
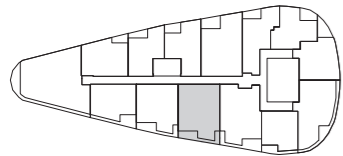
### LEVEL 7



### LEVEL 8-28



### LEVEL 29-30



## GURNER™

**DISCLAIMER**  
Any dimensions, layout, design features, views, areas, photographs and artist's impressions are for presentation purposes and indicative only. They are also subject to change in accordance with the contract of sale. Furniture and whitegoods are not included in the price. Floorboard upgrade shown. Any dimensions or areas may differ from surveyed areas due to the different methods of measurement. Final product may differ from that described. Purchasers should check the plans and specifications included in the terms of the contract of sale carefully prior to signing the contract.



# NATURAL/WARM COLOUR PALETTE

# FV COLOUR PALETTE (UPGRADE)

# APARTMENTS .05

## KITCHEN/LIVING

<b>SINK</b>	Above mount stainless steel
<b>SINK MIXER</b>	Mixer tap
<b>COOK TOP</b>	60cm stainless steel (gas)
<b>OVEN</b>	60cm stainless steel oven
<b>RANGEHOOD</b>	60cm stainless steel rangehood
<b>DISHWASHER</b>	Stainless steel dishwasher
<b>SPLASHBACK</b>	Reconstituted stone natural/warm
<b>BENCH TOP</b>	Reconstituted stone natural/warm
<b>JOINERY UNITS</b>	2-Pac
<b>CEILINGS</b>	Painted plasterboard
<b>FLOORING</b>	Selected tile natural/warm
<b>LIGHTING</b>	5-star ESD recessed downlights

## BEDROOMS

<b>FLOORING</b>	Carpet natural/warm
<b>WALLS &amp; CEILINGS</b>	Painted plasterboard
<b>SKIRTINGS &amp; ARCHITRAVES</b>	Painted timber skirtings and architraves
<b>LIGHTING</b>	Selected 5-star recessed downlights
<b>ROBES</b>	Mirrored robes

## BATHROOM

<b>BASIN</b>	Solid surface basin
<b>BASIN MIXER</b>	Single mixer
<b>VANITY CABINETS</b>	Mirror overhead cabinet
<b>JOINERY VANITY</b>	Custom made piece
<b>TOILET SUITE</b>	Freestanding white ceramic
<b>MASTER ENSUITE</b>	Wall mounted shower head
<b>BATHROOM (OTHER)</b>	Wall mounted shower head
<b>SHOWER SCREEN</b>	Semi frameless shower screen to 2100mm
<b>MIRROR</b>	Overhead cabinet mirror
<b>FLOOR &amp; WALL TILE</b>	Natural/warm tile to shower recess and vanity wall to shower screen height
<b>CEILINGS</b>	Painted plasterboard
<b>ADDITIONALS</b>	Toilet roll holder and towel rail Washing machine taps

## GENERAL

<b>WINDOWS</b>	Double glazed
<b>BALCONY</b>	Double sliding doors
<b>TERRACES &amp; BALCONIES</b>	Tile or screed
<b>SECURITY</b>	Audio and video intercom
<b>HEATING &amp; COOLING</b>	Reverse cycle heating and cooling To bedrooms and living zones Condenser unit located on balcony (to most)
<b>CARPARK</b>	Secure garage with internal access

## OPTIONAL UPGRADES

<b>OVEN AND COOK TOP</b>	Miele appliances
<b>DISHWASHER</b>	Miele integrated dishwasher
<b>TAPWARE</b>	Rose Gold
<b>KITCHEN JOINERY</b>	Soft close kitchen joinery LED strip lighting
<b>WINDOW FURNISHINGS</b>	Blinds to bedrooms and living
<b>STORAGE</b>	Oven bonnet storage cage
<b>BATHROOM</b>	LED strip lighting Full height tile
<b>LIVING/KITCHEN FLOOR</b>	Floorboards

## KITCHEN/LIVING

<b>SINK</b>	Undermount stainless steel
<b>SINK MIXER</b>	Rosegold mixer tap
<b>COOK TOP</b>	60cm Miele gas cooktop
<b>OVEN</b>	60cm Miele oven
<b>RANGEHOOD</b>	60cm Miele rangehood
<b>DISHWASHER</b>	Miele integrated dishwasher
<b>SPLASHBACK</b>	Stone with LED strip lighting
<b>BENCH TOP</b>	Stone
<b>JOINERY UNITS</b>	Timber veneer laminate
<b>CEILINGS</b>	Painted plasterboard
<b>FLOORING</b>	Timber flooring

## BEDROOMS

<b>FLOORING</b>	Plush carpet
<b>WALLS &amp; CEILINGS</b>	Painted plasterboard
<b>SKIRTINGS &amp; ARCHITRAVES</b>	Painted timber skirtings and architraves
<b>LIGHTING</b>	Selected low voltage recessed downlights
<b>MASTER ROBES</b>	Mirrored robes
<b>ROBES (OTHER)</b>	Mirrored robes

## BATHROOM

<b>BASIN</b>	Solid surface basin
<b>BASIN MIXER</b>	Rose Gold Mixer
<b>VANITY CABINETS</b>	Mirror overhead cabinet
<b>JOINERY VANITY</b>	Custom design piece with LED strip lighting
<b>TOILET SUITE</b>	Freestanding white ceramic
<b>MASTER ENSUITE</b>	Wall mounted shower head (rose gold finish)
<b>BATHROOM (OTHER)</b>	Wall mounted shower head (rose gold finish)
<b>SHOWER SCREEN</b>	Semi frameless shower screen to 2100mm
<b>MIRROR</b>	Overhead cabinet mirror
<b>FLOOR &amp; WALL TILE</b>	FV tile to shower recess and vanity wall to shower screen height
<b>CEILINGS</b>	Painted plasterboard
<b>ADDITIONAL</b>	Toilet roll holder and towel rail Washing machine taps

## GENERAL

<b>WINDOWS</b>	Double glazed
<b>BALCONY</b>	Double sliding doors
<b>TERRACES &amp; BALCONIES</b>	Tile or screed
<b>SECURITY</b>	Audio and video intercom
<b>HEATING &amp; COOLING</b>	Reverse cycle heating and cooling To bedrooms and living zones Condenser unit located on balcony (to most)
<b>CARPARK</b>	Secure garage with internal access

# FLATIRON

FORTITUDE VALLEY  
BRISBANE

GURNER™

# .05

## 2 BEDROOM / 1 BATHROOM

TOTAL APARTMENT AREA    66m<sup>2</sup>    710ft<sup>2</sup>

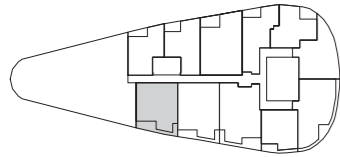
Scale: Not to scale. All dimensions are approximate.

Floorboard upgrade shown.

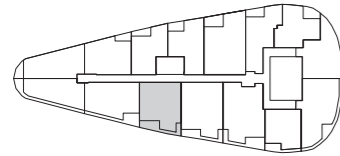
<sup>1</sup> Enclosed Area.

∟ Sliding doors.

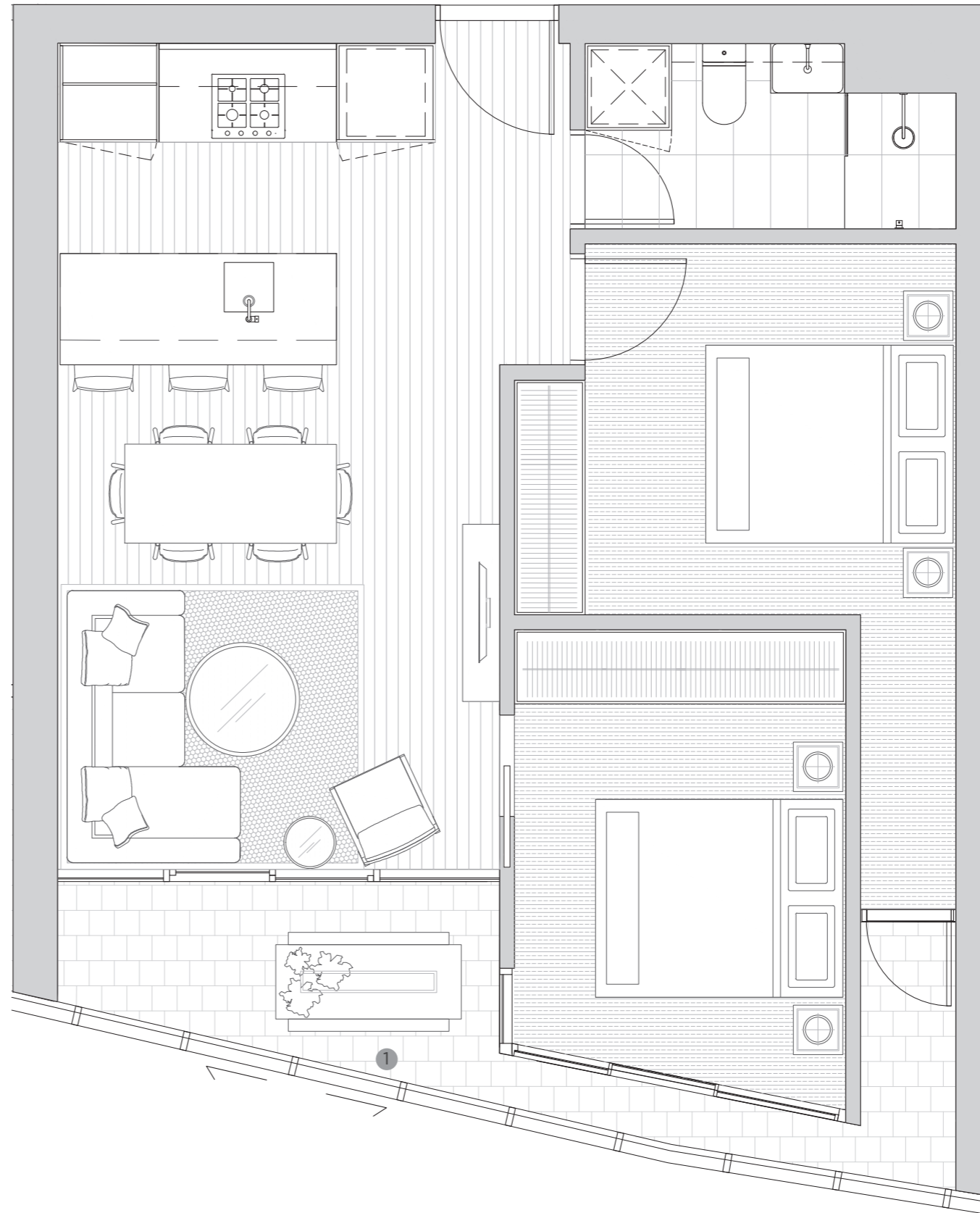
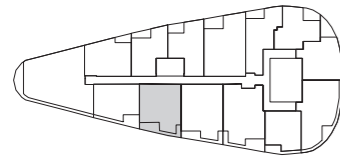
### LEVEL 7



### LEVEL 8-28



### LEVEL 29-30



## GURNER™

**DISCLAIMER**  
Any dimensions, layout, design features, views, areas, photographs and artist's impressions are for presentation purposes and indicative only. They are also subject to change in accordance with the contract of sale. Furniture and whitegoods are not included in the price. Floorboard upgrade shown. Any dimensions or areas may differ from surveyed areas due to the different methods of measurement. Final product may differ from that described. Purchasers should check the plans and specifications included in the terms of the contract of sale carefully prior to signing the contract.

# NATURAL/WARM COLOUR PALETTE

# FV COLOUR PALETTE (UPGRADE)

# APARTMENTS .06

## KITCHEN/LIVING

<b>SINK</b>	Above mount stainless steel
<b>SINK MIXER</b>	Mixer tap
<b>COOK TOP</b>	60cm stainless steel (gas)
<b>OVEN</b>	60cm stainless steel oven
<b>RANGEHOOD</b>	60cm stainless steel rangehood
<b>DISHWASHER</b>	Stainless steel dishwasher
<b>SPLASHBACK</b>	Reconstituted stone natural/warm
<b>BENCH TOP</b>	Reconstituted stone natural/warm
<b>JOINERY UNITS</b>	2-Pac
<b>CEILINGS</b>	Painted plasterboard
<b>FLOORING</b>	Selected tile natural/warm
<b>LIGHTING</b>	5-star ESD recessed downlights

## BEDROOMS

<b>FLOORING</b>	Carpet natural/warm
<b>WALLS &amp; CEILINGS</b>	Painted plasterboard
<b>SKIRTINGS &amp; ARCHITRAVES</b>	Painted timber skirtings and architraves
<b>LIGHTING</b>	Selected 5-star recessed downlights
<b>ROBES</b>	Mirrored robes

## BATHROOM

<b>BASIN</b>	Solid surface basin
<b>BASIN MIXER</b>	Single mixer
<b>VANITY CABINETS</b>	Mirror overhead cabinet
<b>JOINERY VANITY</b>	Custom made piece
<b>TOILET SUITE</b>	Freestanding white ceramic
<b>MASTER ENSUITE</b>	Wall mounted shower head
<b>BATHROOM (OTHER)</b>	Wall mounted shower head
<b>SHOWER SCREEN</b>	Semi frameless shower screen to 2100mm
<b>MIRROR</b>	Overhead cabinet mirror
<b>FLOOR &amp; WALL TILE</b>	Natural/warm tile to shower recess and vanity wall to shower screen height
<b>CEILINGS</b>	Painted plasterboard
<b>ADDITIONALS</b>	Toilet roll holder and towel rail Washing machine taps

## GENERAL

<b>WINDOWS</b>	Double glazed
<b>BALCONY</b>	Double sliding doors
<b>TERRACES &amp; BALCONIES</b>	Tile or screed
<b>SECURITY</b>	Audio and video intercom
<b>HEATING &amp; COOLING</b>	Reverse cycle heating and cooling To bedrooms and living zones Condenser unit located on balcony (to most)
<b>CARPARK</b>	Secure garage with internal access

## OPTIONAL UPGRADES

<b>OVEN AND COOK TOP</b>	Miele appliances
<b>DISHWASHER</b>	Miele integrated dishwasher
<b>TAPWARE</b>	Rose Gold
<b>KITCHEN JOINERY</b>	Soft close kitchen joinery LED strip lighting
<b>WINDOW FURNISHINGS</b>	Blinds to bedrooms and living
<b>STORAGE</b>	Oven bonnet storage cage
<b>BATHROOM</b>	LED strip lighting Full height tile
<b>LIVING/KITCHEN FLOOR</b>	Floorboards

## KITCHEN/LIVING

<b>SINK</b>	Undermount stainless steel
<b>SINK MIXER</b>	Rosegold mixer tap
<b>COOK TOP</b>	60cm Miele gas cooktop
<b>OVEN</b>	60cm Miele oven
<b>RANGEHOOD</b>	60cm Miele rangehood
<b>DISHWASHER</b>	Miele integrated dishwasher
<b>SPLASHBACK</b>	Stone with LED strip lighting
<b>BENCH TOP</b>	Stone
<b>JOINERY UNITS</b>	Timber veneer laminate
<b>CEILINGS</b>	Painted plasterboard
<b>FLOORING</b>	Timber flooring

## BEDROOMS

<b>FLOORING</b>	Plush carpet
<b>WALLS &amp; CEILINGS</b>	Painted plasterboard
<b>SKIRTINGS &amp; ARCHITRAVES</b>	Painted timber skirtings and architraves
<b>LIGHTING</b>	Selected low voltage recessed downlights
<b>MASTER ROBES</b>	Mirrored robes
<b>ROBES (OTHER)</b>	Mirrored robes

## BATHROOM

<b>BASIN</b>	Solid surface basin
<b>BASIN MIXER</b>	Rose Gold Mixer
<b>VANITY CABINETS</b>	Mirror overhead cabinet
<b>JOINERY VANITY</b>	Custom design piece with LED strip lighting
<b>TOILET SUITE</b>	Freestanding white ceramic
<b>MASTER ENSUITE</b>	Wall mounted shower head (rose gold finish)
<b>BATHROOM (OTHER)</b>	Wall mounted shower head (rose gold finish)
<b>SHOWER SCREEN</b>	Semi frameless shower screen to 2100mm
<b>MIRROR</b>	Overhead cabinet mirror
<b>FLOOR &amp; WALL TILE</b>	FV tile to shower recess and vanity wall to shower screen height
<b>CEILINGS</b>	Painted plasterboard
<b>ADDITIONAL</b>	Toilet roll holder and towel rail Washing machine taps

## GENERAL

<b>WINDOWS</b>	Double glazed
<b>BALCONY</b>	Double sliding doors
<b>TERRACES &amp; BALCONIES</b>	Tile or screed
<b>SECURITY</b>	Audio and video intercom
<b>HEATING &amp; COOLING</b>	Reverse cycle heating and cooling To bedrooms and living zones Condenser unit located on balcony (to most)
<b>CARPARK</b>	Secure garage with internal access

# FLATIRON

FORTITUDE VALLEY  
BRISBANE

GURNER™

# .06

## 2 BEDROOM / 2 BATHROOM

TOTAL APARTMENT AREA    66m<sup>2</sup>    710ft<sup>2</sup>

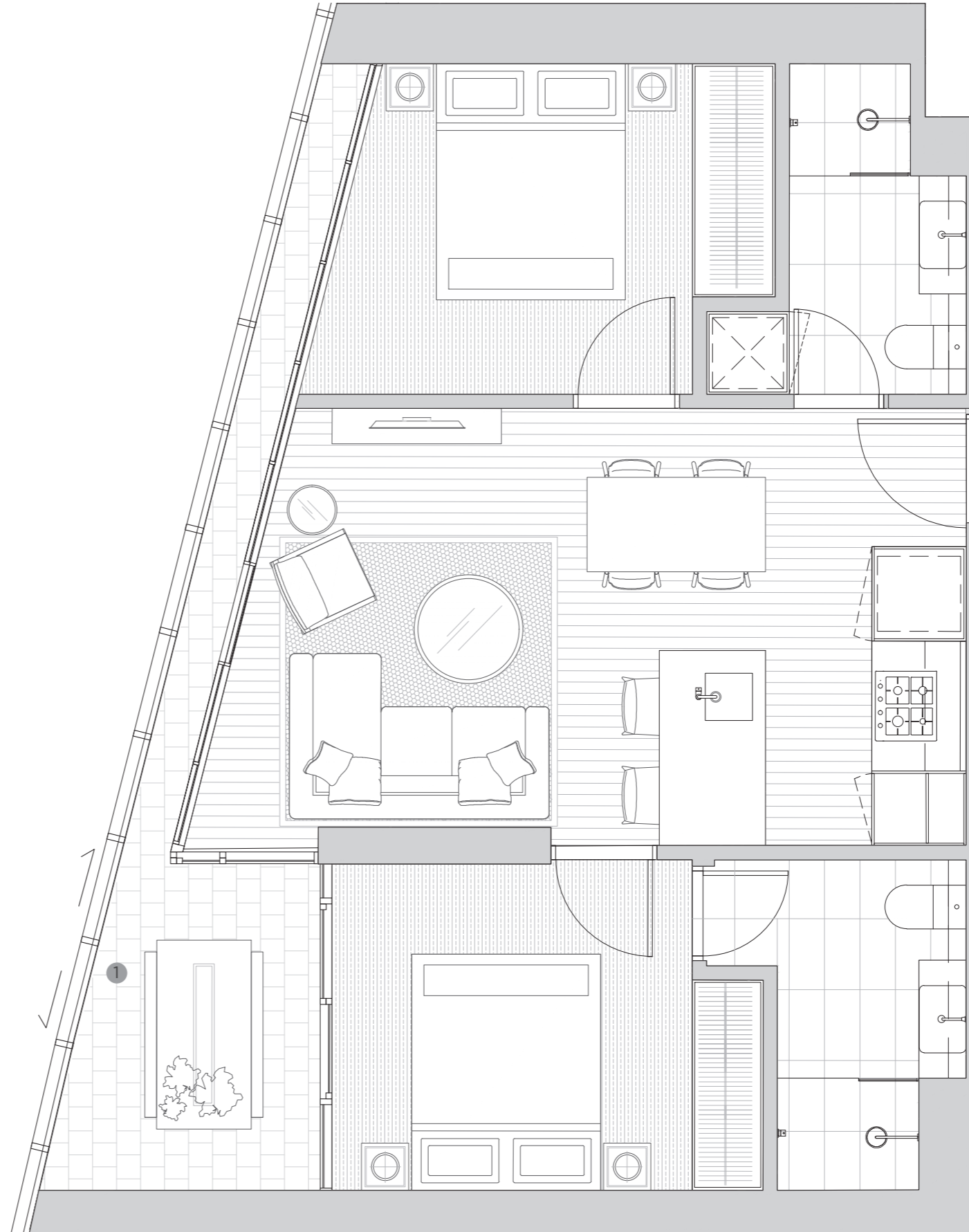
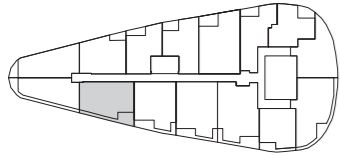
Scale: Not to scale. All dimensions are approximate.

Floorboard upgrade shown.

<sup>1</sup> Enclosed Area.

∠ Sliding doors.

### LEVEL 8-28



## GURNER™

**DISCLAIMER**  
Any dimensions, layout, design features, views, areas, photographs and artist's impressions are for presentation purposes and indicative only. They are also subject to change in accordance with the contract of sale. Furniture and whitegoods are not included in the price. Floorboard upgrade shown. Any dimensions or areas may differ from surveyed areas due to the different methods of measurement. Final product may differ from that described. Purchasers should check the plans and specifications included in the terms of the contract of sale carefully prior to signing the contract.

# NATURAL/WARM COLOUR PALETTE

# FV COLOUR PALETTE (UPGRADE)

# APARTMENTS .07

## KITCHEN/LIVING

<b>SINK</b>	Above mount stainless steel
<b>SINK MIXER</b>	Mixer tap
<b>COOK TOP</b>	60cm stainless steel (gas)
<b>OVEN</b>	60cm stainless steel oven
<b>RANGEHOOD</b>	60cm stainless steel rangehood
<b>DISHWASHER</b>	Stainless steel dishwasher
<b>SPLASHBACK</b>	Reconstituted stone natural/warm
<b>BENCH TOP</b>	Reconstituted stone natural/warm
<b>JOINERY UNITS</b>	2-Pac
<b>CEILINGS</b>	Painted plasterboard
<b>FLOORING</b>	Selected tile natural/warm
<b>LIGHTING</b>	5-star ESD recessed downlights

## BEDROOMS

<b>FLOORING</b>	Carpet natural/warm
<b>WALLS &amp; CEILINGS</b>	Painted plasterboard
<b>SKIRTINGS &amp; ARCHITRAVES</b>	Painted timber skirtings and architraves
<b>LIGHTING</b>	Selected 5-star recessed downlights
<b>ROBES</b>	Mirrored robes

## BATHROOM

<b>BASIN</b>	Solid surface basin
<b>BASIN MIXER</b>	Single mixer
<b>VANITY CABINETS</b>	Mirror overhead cabinet
<b>JOINERY VANITY</b>	Custom made piece
<b>TOILET SUITE</b>	Freestanding white ceramic
<b>MASTER ENSUITE</b>	Wall mounted shower head
<b>BATHROOM (OTHER)</b>	Wall mounted shower head
<b>SHOWER SCREEN</b>	Semi frameless shower screen to 2100mm
<b>MIRROR</b>	Overhead cabinet mirror
<b>FLOOR &amp; WALL TILE</b>	Natural/warm tile to shower recess and vanity wall to shower screen height
<b>CEILINGS</b>	Painted plasterboard
<b>ADDITIONALS</b>	Toilet roll holder and towel rail Washing machine taps

## GENERAL

<b>WINDOWS</b>	Double glazed
<b>BALCONY</b>	Double sliding doors
<b>TERRACES &amp; BALCONIES</b>	Tile or screed
<b>SECURITY</b>	Audio and video intercom
<b>HEATING &amp; COOLING</b>	Reverse cycle heating and cooling To bedrooms and living zones Condenser unit located on balcony (to most)
<b>CARPARK</b>	Secure garage with internal access

## OPTIONAL UPGRADES

<b>OVEN AND COOK TOP</b>	Miele appliances
<b>DISHWASHER</b>	Miele integrated dishwasher
<b>TAPWARE</b>	Rose Gold
<b>KITCHEN JOINERY</b>	Soft close kitchen joinery LED strip lighting
<b>WINDOW FURNISHINGS</b>	Blinds to bedrooms and living
<b>STORAGE</b>	Oven bonnet storage cage
<b>BATHROOM</b>	LED strip lighting Full height tile
<b>LIVING/KITCHEN FLOOR</b>	Floorboards

## KITCHEN/LIVING

<b>SINK</b>	Undermount stainless steel
<b>SINK MIXER</b>	Rosegold mixer tap
<b>COOK TOP</b>	60cm Miele gas cooktop
<b>OVEN</b>	60cm Miele oven
<b>RANGEHOOD</b>	60cm Miele rangehood
<b>DISHWASHER</b>	Miele integrated dishwasher
<b>SPLASHBACK</b>	Stone with LED strip lighting
<b>BENCH TOP</b>	Stone
<b>JOINERY UNITS</b>	Timber veneer laminate
<b>CEILINGS</b>	Painted plasterboard
<b>FLOORING</b>	Timber flooring

## BEDROOMS

<b>FLOORING</b>	Plush carpet
<b>WALLS &amp; CEILINGS</b>	Painted plasterboard
<b>SKIRTINGS &amp; ARCHITRAVES</b>	Painted timber skirtings and architraves
<b>LIGHTING</b>	Selected low voltage recessed downlights
<b>MASTER ROBES</b>	Mirrored robes
<b>ROBES (OTHER)</b>	Mirrored robes

## BATHROOM

<b>BASIN</b>	Solid surface basin
<b>BASIN MIXER</b>	Rose Gold Mixer
<b>VANITY CABINETS</b>	Mirror overhead cabinet
<b>JOINERY VANITY</b>	Custom design piece with LED strip lighting
<b>TOILET SUITE</b>	Freestanding white ceramic
<b>MASTER ENSUITE</b>	Wall mounted shower head (rose gold finish)
<b>BATHROOM (OTHER)</b>	Wall mounted shower head (rose gold finish)
<b>SHOWER SCREEN</b>	Semi frameless shower screen to 2100mm
<b>MIRROR</b>	Overhead cabinet mirror
<b>FLOOR &amp; WALL TILE</b>	FV tile to shower recess and vanity wall to shower screen height
<b>CEILINGS</b>	Painted plasterboard
<b>ADDITIONAL</b>	Toilet roll holder and towel rail Washing machine taps

## GENERAL

<b>WINDOWS</b>	Double glazed
<b>BALCONY</b>	Double sliding doors
<b>TERRACES &amp; BALCONIES</b>	Tile or screed
<b>SECURITY</b>	Audio and video intercom
<b>HEATING &amp; COOLING</b>	Reverse cycle heating and cooling To bedrooms and living zones Condenser unit located on balcony (to most)
<b>CARPARK</b>	Secure garage with internal access

# FLATIRON

FORTITUDE VALLEY  
BRISBANE

GURNER™

# .07

## 1 BEDROOM / 1 BATHROOM

<b>TOTAL APARTMENT AREA</b>	<b>56m<sup>2</sup></b>	<b>603ft<sup>2</sup></b>
INTERNAL AREA	52m <sup>2</sup>	560ft <sup>2</sup>
BALCONY	4m <sup>2</sup>	43ft <sup>2</sup>

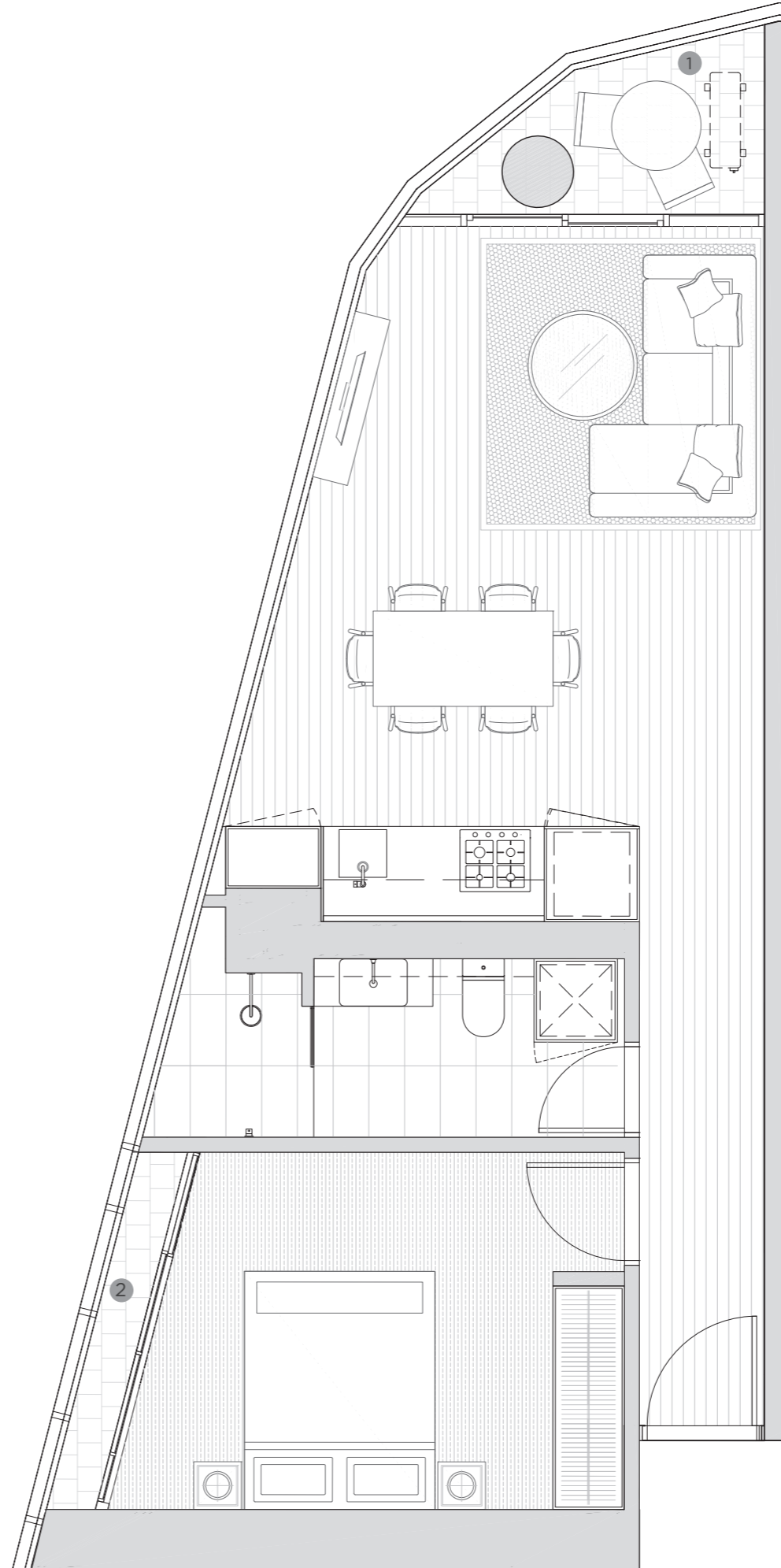
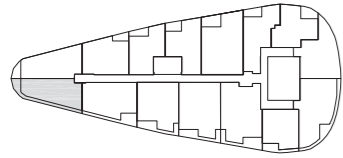
Scale: Not to scale. All dimensions are approximate.

Floorboard upgrade shown.

<sup>1</sup> External balcony.

<sup>2</sup> Enclosed area.

### LEVEL 8-28



## GURNER™

**DISCLAIMER**  
Any dimensions, layout, design features, views, areas, photographs and artist's impressions are for presentation purposes and indicative only. They are also subject to change in accordance with the contract of sale. Furniture and whitegoods are not included in the price. Floorboard upgrade shown. Any dimensions or areas may differ from surveyed areas due to the different methods of measurement. Final product may differ from that described. Purchasers should check the plans and specifications included in the terms of the contract of sale carefully prior to signing the contract.

# NATURAL/WARM COLOUR PALETTE

# FV COLOUR PALETTE (UPGRADE)

# APARTMENTS .08

## KITCHEN/LIVING

<b>SINK</b>	Above mount stainless steel
<b>SINK MIXER</b>	Mixer tap
<b>COOK TOP</b>	60cm stainless steel (gas)
<b>OVEN</b>	60cm stainless steel oven
<b>RANGEHOOD</b>	60cm stainless steel rangehood
<b>DISHWASHER</b>	Stainless steel dishwasher
<b>SPLASHBACK</b>	Reconstituted stone natural/warm
<b>BENCH TOP</b>	Reconstituted stone natural/warm
<b>JOINERY UNITS</b>	2-Pac
<b>CEILINGS</b>	Painted plasterboard
<b>FLOORING</b>	Selected tile natural/warm
<b>LIGHTING</b>	5-star ESD recessed downlights

## BEDROOMS

<b>FLOORING</b>	Carpet natural/warm
<b>WALLS &amp; CEILINGS</b>	Painted plasterboard
<b>SKIRTINGS &amp; ARCHITRAVES</b>	Painted timber skirtings and architraves
<b>LIGHTING</b>	Selected 5-star recessed downlights
<b>ROBES</b>	Mirrored robes

## BATHROOM

<b>BASIN</b>	Solid surface basin
<b>BASIN MIXER</b>	Single mixer
<b>VANITY CABINETS</b>	Mirror overhead cabinet
<b>JOINERY VANITY</b>	Custom made piece
<b>TOILET SUITE</b>	Freestanding white ceramic
<b>MASTER ENSUITE</b>	Wall mounted shower head
<b>BATHROOM (OTHER)</b>	Wall mounted shower head
<b>SHOWER SCREEN</b>	Semi frameless shower screen to 2100mm
<b>MIRROR</b>	Overhead cabinet mirror
<b>FLOOR &amp; WALL TILE</b>	Natural/warm tile to shower recess and vanity wall to shower screen height
<b>CEILINGS</b>	Painted plasterboard
<b>ADDITIONALS</b>	Toilet roll holder and towel rail Washing machine taps

## GENERAL

<b>WINDOWS</b>	Double glazed
<b>BALCONY</b>	Double sliding doors
<b>TERRACES &amp; BALCONIES</b>	Tile or screed
<b>SECURITY</b>	Audio and video intercom
<b>HEATING &amp; COOLING</b>	Reverse cycle heating and cooling To bedrooms and living zones Condenser unit located on balcony (to most)
<b>CARPARK</b>	Secure garage with internal access

## OPTIONAL UPGRADES

<b>OVEN AND COOK TOP</b>	Miele appliances
<b>DISHWASHER</b>	Miele integrated dishwasher
<b>TAPWARE</b>	Rose Gold
<b>KITCHEN JOINERY</b>	Soft close kitchen joinery LED strip lighting
<b>WINDOW FURNISHINGS</b>	Blinds to bedrooms and living
<b>STORAGE</b>	Oven bonnet storage cage
<b>BATHROOM</b>	LED strip lighting Full height tile
<b>LIVING/KITCHEN FLOOR</b>	Floorboards

## KITCHEN/LIVING

<b>SINK</b>	Undermount stainless steel
<b>SINK MIXER</b>	Rosegold mixer tap
<b>COOK TOP</b>	60cm Miele gas cooktop
<b>OVEN</b>	60cm Miele oven
<b>RANGEHOOD</b>	60cm Miele rangehood
<b>DISHWASHER</b>	Miele integrated dishwasher
<b>SPLASHBACK</b>	Stone with LED strip lighting
<b>BENCH TOP</b>	Stone
<b>JOINERY UNITS</b>	Timber veneer laminate
<b>CEILINGS</b>	Painted plasterboard
<b>FLOORING</b>	Timber flooring

## BEDROOMS

<b>FLOORING</b>	Plush carpet
<b>WALLS &amp; CEILINGS</b>	Painted plasterboard
<b>SKIRTINGS &amp; ARCHITRAVES</b>	Painted timber skirtings and architraves
<b>LIGHTING</b>	Selected low voltage recessed downlights
<b>MASTER ROBES</b>	Mirrored robes
<b>ROBES (OTHER)</b>	Mirrored robes

## BATHROOM

<b>BASIN</b>	Solid surface basin
<b>BASIN MIXER</b>	Rose Gold Mixer
<b>VANITY CABINETS</b>	Mirror overhead cabinet
<b>JOINERY VANITY</b>	Custom design piece with LED strip lighting
<b>TOILET SUITE</b>	Freestanding white ceramic
<b>MASTER ENSUITE</b>	Wall mounted shower head (rose gold finish)
<b>BATHROOM (OTHER)</b>	Wall mounted shower head (rose gold finish)
<b>SHOWER SCREEN</b>	Semi frameless shower screen to 2100mm
<b>MIRROR</b>	Overhead cabinet mirror
<b>FLOOR &amp; WALL TILE</b>	FV tile to shower recess and vanity wall to shower screen height
<b>CEILINGS</b>	Painted plasterboard
<b>ADDITIONAL</b>	Toilet roll holder and towel rail Washing machine taps

## GENERAL

<b>WINDOWS</b>	Double glazed
<b>BALCONY</b>	Double sliding doors
<b>TERRACES &amp; BALCONIES</b>	Tile or screed
<b>SECURITY</b>	Audio and video intercom
<b>HEATING &amp; COOLING</b>	Reverse cycle heating and cooling To bedrooms and living zones Condenser unit located on balcony (to most)
<b>CARPARK</b>	Secure garage with internal access

# FLATIRON

FORTITUDE VALLEY  
BRISBANE

GURNER™

# .08

## 1 BEDROOM / 1 BATHROOM

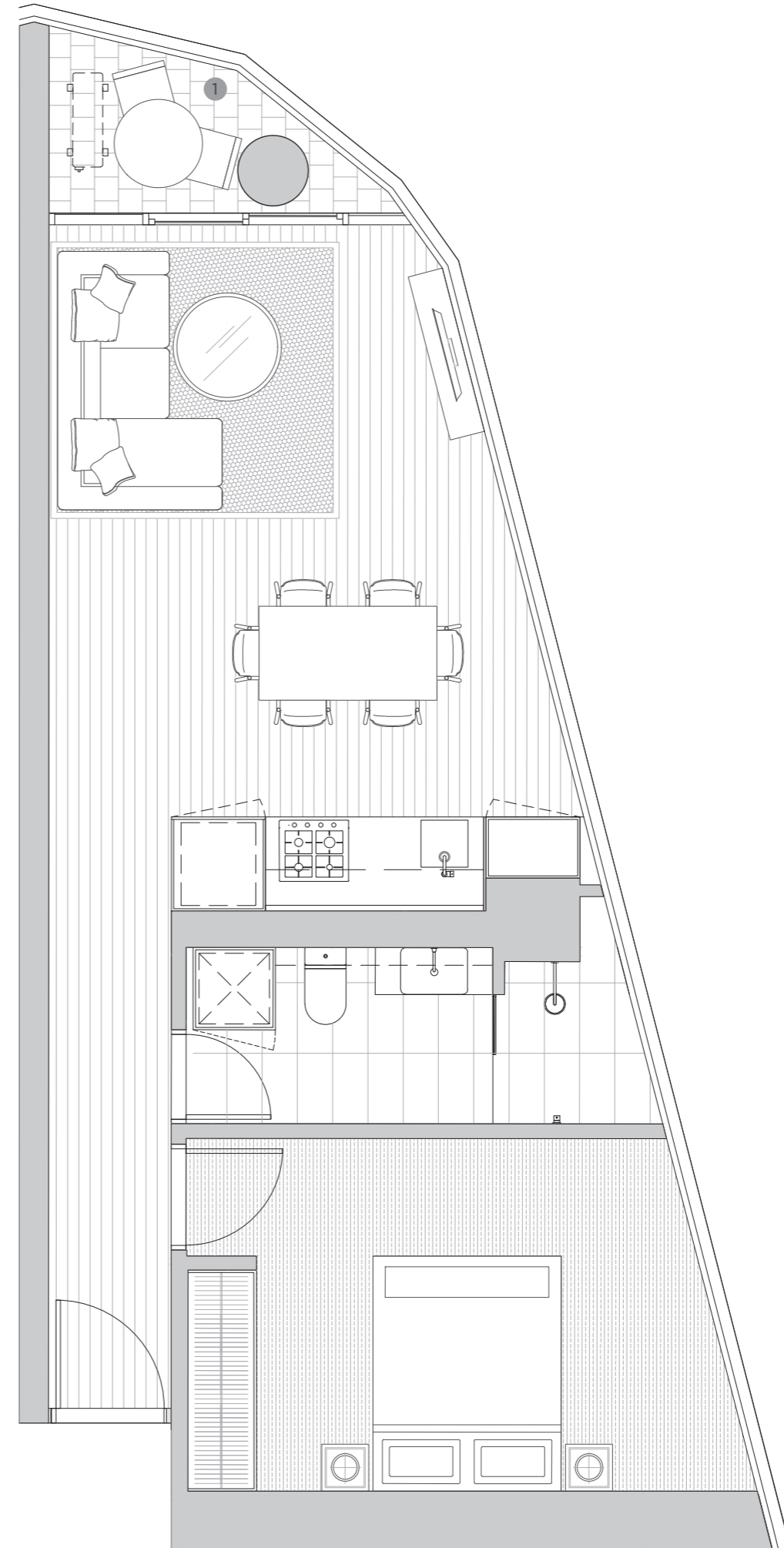
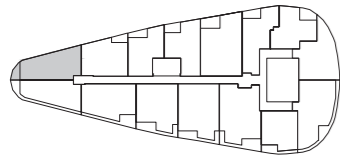
<b>TOTAL APARTMENT AREA</b>	<b>56m<sup>2</sup></b>	<b>603ft<sup>2</sup></b>
INTERNAL AREA	52m <sup>2</sup>	560ft <sup>2</sup>
BALCONY	4m <sup>2</sup>	43ft <sup>2</sup>

Scale: Not to scale. All dimensions are approximate.

Floorboard upgrade shown.

<sup>1</sup> External balcony.

### LEVEL 8-28



## GURNER™

**DISCLAIMER**  
Any dimensions, layout, design features, views, areas, photographs and artist's impressions are for presentation purposes and indicative only. They are also subject to change in accordance with the contract of sale. Furniture and whitegoods are not included in the price. Floorboard upgrade shown. Any dimensions or areas may differ from surveyed areas due to the different methods of measurement. Final product may differ from that described. Purchasers should check the plans and specifications included in the terms of the contract of sale carefully prior to signing the contract.



# NATURAL/WARM COLOUR PALETTE

# FV COLOUR PALETTE (UPGRADE)

# APARTMENTS .09

## KITCHEN/LIVING

<b>SINK</b>	Above mount stainless steel
<b>SINK MIXER</b>	Mixer tap
<b>COOK TOP</b>	60cm stainless steel (gas)
<b>OVEN</b>	60cm stainless steel oven
<b>RANGEHOOD</b>	60cm stainless steel rangehood
<b>DISHWASHER</b>	Stainless steel dishwasher
<b>SPLASHBACK</b>	Reconstituted stone natural/warm
<b>BENCH TOP</b>	Reconstituted stone natural/warm
<b>JOINERY UNITS</b>	2-Pac
<b>CEILINGS</b>	Painted plasterboard
<b>FLOORING</b>	Selected tile natural/warm
<b>LIGHTING</b>	5-star ESD recessed downlights

## BEDROOMS

<b>FLOORING</b>	Carpet natural/warm
<b>WALLS &amp; CEILINGS</b>	Painted plasterboard
<b>SKIRTINGS &amp; ARCHITRAVES</b>	Painted timber skirtings and architraves
<b>LIGHTING</b>	Selected 5-star recessed downlights
<b>ROBES</b>	Mirrored robes

## BATHROOM

<b>BASIN</b>	Solid surface basin
<b>BASIN MIXER</b>	Single mixer
<b>VANITY CABINETS</b>	Mirror overhead cabinet
<b>JOINERY VANITY</b>	Custom made piece
<b>TOILET SUITE</b>	Freestanding white ceramic
<b>MASTER ENSUITE</b>	Wall mounted shower head
<b>BATHROOM (OTHER)</b>	Wall mounted shower head
<b>SHOWER SCREEN</b>	Semi frameless shower screen to 2100mm
<b>MIRROR</b>	Overhead cabinet mirror
<b>FLOOR &amp; WALL TILE</b>	Natural/warm tile to shower recess and vanity wall to shower screen height
<b>CEILINGS</b>	Painted plasterboard
<b>ADDITIONALS</b>	Toilet roll holder and towel rail Washing machine taps

## GENERAL

<b>WINDOWS</b>	Double glazed
<b>BALCONY</b>	Double sliding doors
<b>TERRACES &amp; BALCONIES</b>	Tile or screed
<b>SECURITY</b>	Audio and video intercom
<b>HEATING &amp; COOLING</b>	Reverse cycle heating and cooling To bedrooms and living zones Condenser unit located on balcony (to most)
<b>CARPARK</b>	Secure garage with internal access

## OPTIONAL UPGRADES

<b>OVEN AND COOK TOP</b>	Miele appliances
<b>DISHWASHER</b>	Miele integrated dishwasher
<b>TAPWARE</b>	Rose Gold
<b>KITCHEN JOINERY</b>	Soft close kitchen joinery LED strip lighting
<b>WINDOW FURNISHINGS</b>	Blinds to bedrooms and living
<b>STORAGE</b>	Oven bonnet storage cage
<b>BATHROOM</b>	LED strip lighting Full height tile
<b>LIVING/KITCHEN FLOOR</b>	Floorboards

## KITCHEN/LIVING

<b>SINK</b>	Undermount stainless steel
<b>SINK MIXER</b>	Rosegold mixer tap
<b>COOK TOP</b>	60cm Miele gas cooktop
<b>OVEN</b>	60cm Miele oven
<b>RANGEHOOD</b>	60cm Miele rangehood
<b>DISHWASHER</b>	Miele integrated dishwasher
<b>SPLASHBACK</b>	Stone with LED strip lighting
<b>BENCH TOP</b>	Stone
<b>JOINERY UNITS</b>	Timber veneer laminate
<b>CEILINGS</b>	Painted plasterboard
<b>FLOORING</b>	Timber flooring

## BEDROOMS

<b>FLOORING</b>	Plush carpet
<b>WALLS &amp; CEILINGS</b>	Painted plasterboard
<b>SKIRTINGS &amp; ARCHITRAVES</b>	Painted timber skirtings and architraves
<b>LIGHTING</b>	Selected low voltage recessed downlights
<b>MASTER ROBES</b>	Mirrored robes
<b>ROBES (OTHER)</b>	Mirrored robes

## BATHROOM

<b>BASIN</b>	Solid surface basin
<b>BASIN MIXER</b>	Rose Gold Mixer
<b>VANITY CABINETS</b>	Mirror overhead cabinet
<b>JOINERY VANITY</b>	Custom design piece with LED strip lighting
<b>TOILET SUITE</b>	Freestanding white ceramic
<b>MASTER ENSUITE</b>	Wall mounted shower head (rose gold finish)
<b>BATHROOM (OTHER)</b>	Wall mounted shower head (rose gold finish)
<b>SHOWER SCREEN</b>	Semi frameless shower screen to 2100mm
<b>MIRROR</b>	Overhead cabinet mirror
<b>FLOOR &amp; WALL TILE</b>	FV tile to shower recess and vanity wall to shower screen height
<b>CEILINGS</b>	Painted plasterboard
<b>ADDITIONAL</b>	Toilet roll holder and towel rail Washing machine taps

## GENERAL

<b>WINDOWS</b>	Double glazed
<b>BALCONY</b>	Double sliding doors
<b>TERRACES &amp; BALCONIES</b>	Tile or screed
<b>SECURITY</b>	Audio and video intercom
<b>HEATING &amp; COOLING</b>	Reverse cycle heating and cooling To bedrooms and living zones Condenser unit located on balcony (to most)
<b>CARPARK</b>	Secure garage with internal access

# FLATIRON

FORTITUDE VALLEY  
BRISBANE

GURNER™

# .09

## 1 BEDROOM / 1 BATHROOM

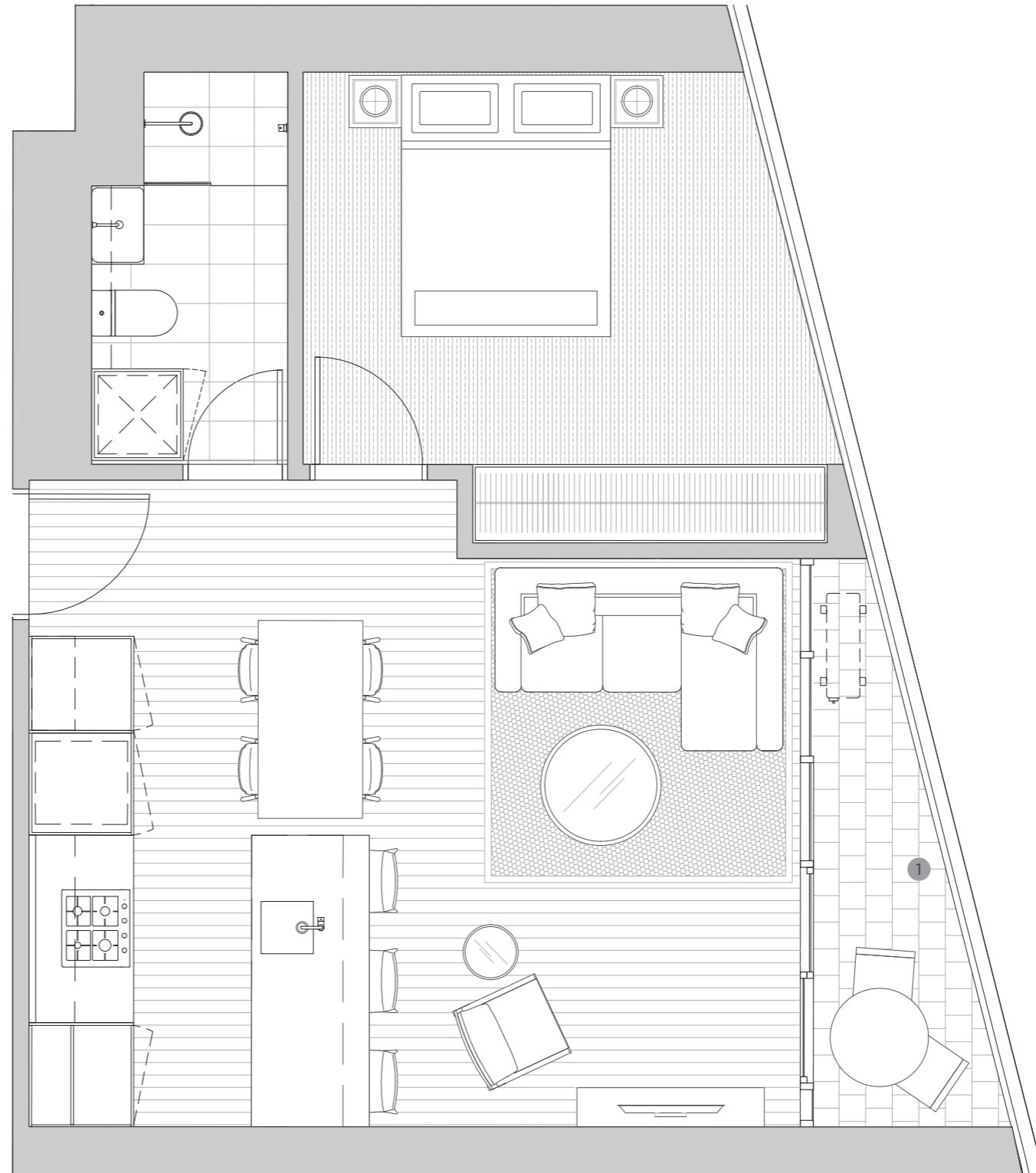
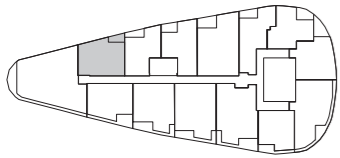
<b>TOTAL APARTMENT AREA</b>	<b>51m<sup>2</sup></b>	<b>549ft<sup>2</sup></b>
INTERNAL AREA	47m <sup>2</sup>	506ft <sup>2</sup>
BALCONY	4m <sup>2</sup>	43ft <sup>2</sup>

Scale: Not to scale. All dimensions are approximate.

Floorboard upgrade shown.

<sup>1</sup> External balcony.

### LEVEL 29-30



## GURNER™

**DISCLAIMER**  
Any dimensions, layout, design features, views, areas, photographs and artist's impressions are for presentation purposes and indicative only. They are also subject to change in accordance with the contract of sale. Furniture and whitegoods are not included in the price. Floorboard upgrade shown. Any dimensions or areas may differ from surveyed areas due to the different methods of measurement. Final product may differ from that described. Purchasers should check the plans and specifications included in the terms of the contract of sale carefully prior to signing the contract.

# NATURAL/WARM COLOUR PALETTE

# FV COLOUR PALETTE (UPGRADE)

# APARTMENTS .10

## KITCHEN/LIVING

<b>SINK</b>	Above mount stainless steel
<b>SINK MIXER</b>	Mixer tap
<b>COOK TOP</b>	60cm stainless steel (gas)
<b>OVEN</b>	60cm stainless steel oven
<b>RANGEHOOD</b>	60cm stainless steel rangehood
<b>DISHWASHER</b>	Stainless steel dishwasher
<b>SPLASHBACK</b>	Reconstituted stone natural/warm
<b>BENCH TOP</b>	Reconstituted stone natural/warm
<b>JOINERY UNITS</b>	2-Pac
<b>CEILINGS</b>	Painted plasterboard
<b>FLOORING</b>	Selected tile natural/warm
<b>LIGHTING</b>	5-star ESD recessed downlights

## BEDROOMS

<b>FLOORING</b>	Carpet natural/warm
<b>WALLS &amp; CEILINGS</b>	Painted plasterboard
<b>SKIRTINGS &amp; ARCHITRAVES</b>	Painted timber skirtings and architraves
<b>LIGHTING</b>	Selected 5-star recessed downlights
<b>ROBES</b>	Mirrored robes

## BATHROOM

<b>BASIN</b>	Solid surface basin
<b>BASIN MIXER</b>	Single mixer
<b>VANITY CABINETS</b>	Mirror overhead cabinet
<b>JOINERY VANITY</b>	Custom made piece
<b>TOILET SUITE</b>	Freestanding white ceramic
<b>MASTER ENSUITE</b>	Wall mounted shower head
<b>BATHROOM (OTHER)</b>	Wall mounted shower head
<b>SHOWER SCREEN</b>	Semi frameless shower screen to 2100mm
<b>MIRROR</b>	Overhead cabinet mirror
<b>FLOOR &amp; WALL TILE</b>	Natural/warm tile to shower recess and vanity wall to shower screen height
<b>CEILINGS</b>	Painted plasterboard
<b>ADDITIONALS</b>	Toilet roll holder and towel rail Washing machine taps

## GENERAL

<b>WINDOWS</b>	Double glazed
<b>BALCONY</b>	Double sliding doors
<b>TERRACES &amp; BALCONIES</b>	Tile or screed
<b>SECURITY</b>	Audio and video intercom
<b>HEATING &amp; COOLING</b>	Reverse cycle heating and cooling To bedrooms and living zones Condenser unit located on balcony (to most)
<b>CARPARK</b>	Secure garage with internal access

## OPTIONAL UPGRADES

<b>OVEN AND COOK TOP</b>	Miele appliances
<b>DISHWASHER</b>	Miele integrated dishwasher
<b>TAPWARE</b>	Rose Gold
<b>KITCHEN JOINERY</b>	Soft close kitchen joinery LED strip lighting
<b>WINDOW FURNISHINGS</b>	Blinds to bedrooms and living
<b>STORAGE</b>	Oven bonnet storage cage
<b>BATHROOM</b>	LED strip lighting Full height tile
<b>LIVING/KITCHEN FLOOR</b>	Floorboards

## KITCHEN/LIVING

<b>SINK</b>	Undermount stainless steel
<b>SINK MIXER</b>	Rosegold mixer tap
<b>COOK TOP</b>	60cm Miele gas cooktop
<b>OVEN</b>	60cm Miele oven
<b>RANGEHOOD</b>	60cm Miele rangehood
<b>DISHWASHER</b>	Miele integrated dishwasher
<b>SPLASHBACK</b>	Stone with LED strip lighting
<b>BENCH TOP</b>	Stone
<b>JOINERY UNITS</b>	Timber veneer laminate
<b>CEILINGS</b>	Painted plasterboard
<b>FLOORING</b>	Timber flooring

## BEDROOMS

<b>FLOORING</b>	Plush carpet
<b>WALLS &amp; CEILINGS</b>	Painted plasterboard
<b>SKIRTINGS &amp; ARCHITRAVES</b>	Painted timber skirtings and architraves
<b>LIGHTING</b>	Selected low voltage recessed downlights
<b>MASTER ROBES</b>	Mirrored robes
<b>ROBES (OTHER)</b>	Mirrored robes

## BATHROOM

<b>BASIN</b>	Solid surface basin
<b>BASIN MIXER</b>	Rose Gold Mixer
<b>VANITY CABINETS</b>	Mirror overhead cabinet
<b>JOINERY VANITY</b>	Custom design piece with LED strip lighting
<b>TOILET SUITE</b>	Freestanding white ceramic
<b>MASTER ENSUITE</b>	Wall mounted shower head (rose gold finish)
<b>BATHROOM (OTHER)</b>	Wall mounted shower head (rose gold finish)
<b>SHOWER SCREEN</b>	Semi frameless shower screen to 2100mm
<b>MIRROR</b>	Overhead cabinet mirror
<b>FLOOR &amp; WALL TILE</b>	FV tile to shower recess and vanity wall to shower screen height
<b>CEILINGS</b>	Painted plasterboard
<b>ADDITIONAL</b>	Toilet roll holder and towel rail Washing machine taps

## GENERAL

<b>WINDOWS</b>	Double glazed
<b>BALCONY</b>	Double sliding doors
<b>TERRACES &amp; BALCONIES</b>	Tile or screed
<b>SECURITY</b>	Audio and video intercom
<b>HEATING &amp; COOLING</b>	Reverse cycle heating and cooling To bedrooms and living zones Condenser unit located on balcony (to most)
<b>CARPARK</b>	Secure garage with internal access

# FLATIRON

FORTITUDE VALLEY  
BRISBANE

GURNER™

# .10

## 1 BEDROOM / 1 BATHROOM

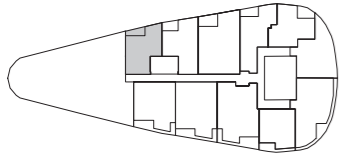
<b>TOTAL APARTMENT AREA</b>	<b>50m<sup>2</sup></b>	<b>538ft<sup>2</sup></b>
INTERNAL AREA	46m <sup>2</sup>	495ft <sup>2</sup>
BALCONY	4m <sup>2</sup>	43ft <sup>2</sup>

Scale: Not to scale. All dimensions are approximate.

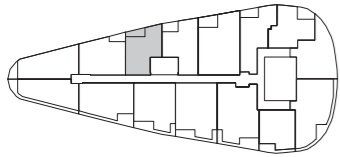
Floorboard upgrade shown.

<sup>1</sup> External balcony.

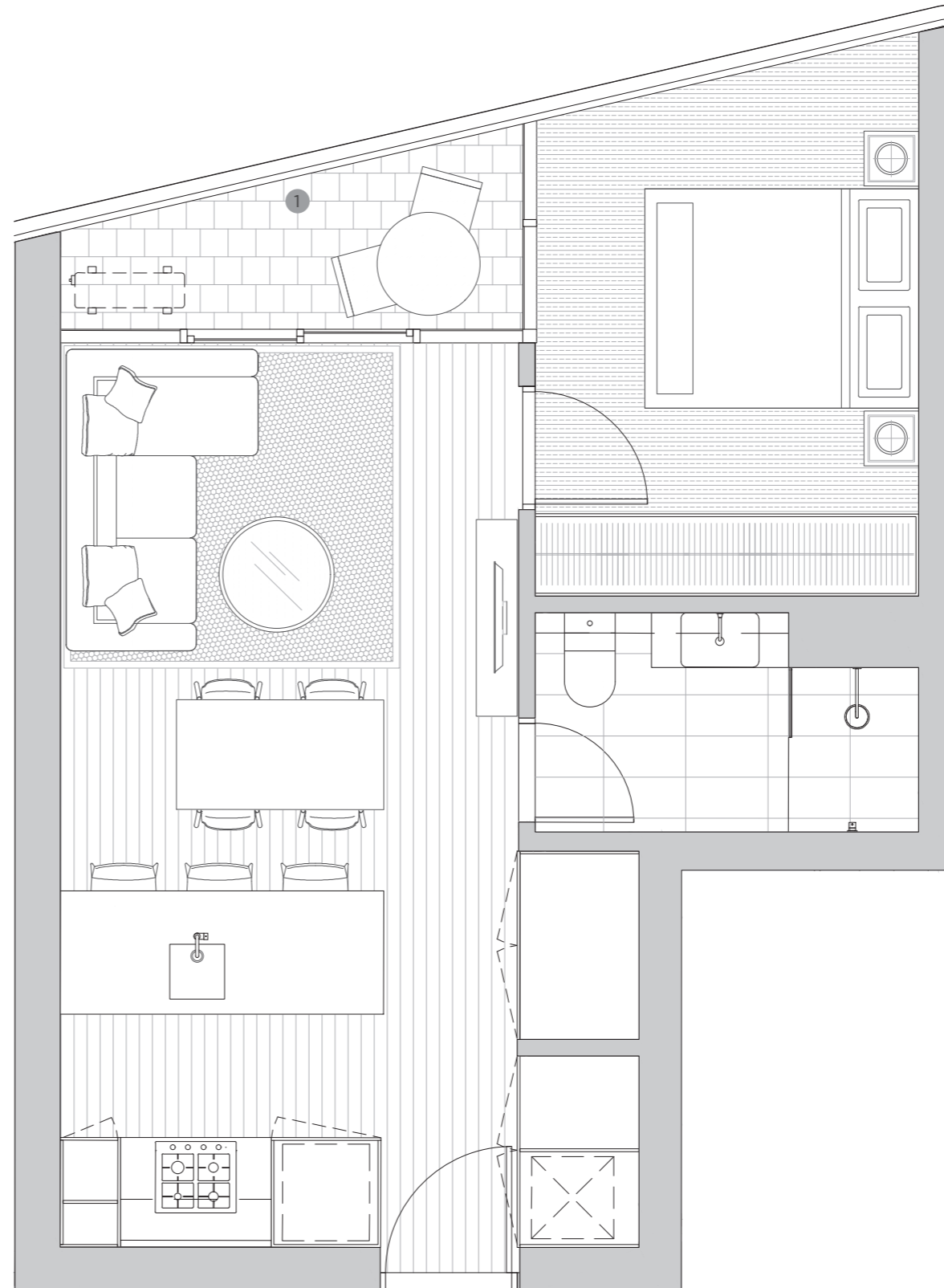
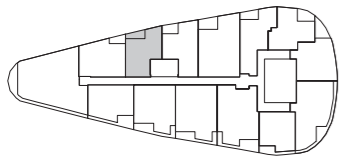
### LEVEL 7



### LEVEL 8-28



### LEVEL 29-30



## GURNER™

**DISCLAIMER**  
Any dimensions, layout, design features, views, areas, photographs and artist's impressions are for presentation purposes and indicative only. They are also subject to change in accordance with the contract of sale. Furniture and whitegoods are not included in the price. Floorboard upgrade shown. Any dimensions or areas may differ from surveyed areas due to the different methods of measurement. Final product may differ from that described. Purchasers should check the plans and specifications included in the terms of the contract of sale carefully prior to signing the contract.

# NATURAL/WARM COLOUR PALETTE

# FV COLOUR PALETTE (UPGRADE)

# APARTMENTS .11

## KITCHEN/LIVING

<b>SINK</b>	Above mount stainless steel
<b>SINK MIXER</b>	Mixer tap
<b>COOK TOP</b>	60cm stainless steel (gas)
<b>OVEN</b>	60cm stainless steel oven
<b>RANGEHOOD</b>	60cm stainless steel rangehood
<b>DISHWASHER</b>	Stainless steel dishwasher
<b>SPLASHBACK</b>	Reconstituted stone natural/warm
<b>BENCH TOP</b>	Reconstituted stone natural/warm
<b>JOINERY UNITS</b>	2-Pac
<b>CEILINGS</b>	Painted plasterboard
<b>FLOORING</b>	Selected tile natural/warm
<b>LIGHTING</b>	5-star ESD recessed downlights

## BEDROOMS

<b>FLOORING</b>	Carpet natural/warm
<b>WALLS &amp; CEILINGS</b>	Painted plasterboard
<b>SKIRTINGS &amp; ARCHITRAVES</b>	Painted timber skirtings and architraves
<b>LIGHTING</b>	Selected 5-star recessed downlights
<b>ROBES</b>	Mirrored robes

## BATHROOM

<b>BASIN</b>	Solid surface basin
<b>BASIN MIXER</b>	Single mixer
<b>VANITY CABINETS</b>	Mirror overhead cabinet
<b>JOINERY VANITY</b>	Custom made piece
<b>TOILET SUITE</b>	Freestanding white ceramic
<b>MASTER ENSUITE</b>	Wall mounted shower head
<b>BATHROOM (OTHER)</b>	Wall mounted shower head
<b>SHOWER SCREEN</b>	Semi frameless shower screen to 2100mm
<b>MIRROR</b>	Overhead cabinet mirror
<b>FLOOR &amp; WALL TILE</b>	Natural/warm tile to shower recess and vanity wall to shower screen height
<b>CEILINGS</b>	Painted plasterboard
<b>ADDITIONALS</b>	Toilet roll holder and towel rail Washing machine taps

## GENERAL

<b>WINDOWS</b>	Double glazed
<b>BALCONY</b>	Double sliding doors
<b>TERRACES &amp; BALCONIES</b>	Tile or screed
<b>SECURITY</b>	Audio and video intercom
<b>HEATING &amp; COOLING</b>	Reverse cycle heating and cooling To bedrooms and living zones Condenser unit located on balcony (to most)
<b>CARPARK</b>	Secure garage with internal access

## OPTIONAL UPGRADES

<b>OVEN AND COOK TOP</b>	Miele appliances
<b>DISHWASHER</b>	Miele integrated dishwasher
<b>TAPWARE</b>	Rose Gold
<b>KITCHEN JOINERY</b>	Soft close kitchen joinery LED strip lighting
<b>WINDOW FURNISHINGS</b>	Blinds to bedrooms and living
<b>STORAGE</b>	Oven bonnet storage cage
<b>BATHROOM</b>	LED strip lighting Full height tile
<b>LIVING/KITCHEN FLOOR</b>	Floorboards

## KITCHEN/LIVING

<b>SINK</b>	Undermount stainless steel
<b>SINK MIXER</b>	Rosegold mixer tap
<b>COOK TOP</b>	60cm Miele gas cooktop
<b>OVEN</b>	60cm Miele oven
<b>RANGEHOOD</b>	60cm Miele rangehood
<b>DISHWASHER</b>	Miele integrated dishwasher
<b>SPLASHBACK</b>	Stone with LED strip lighting
<b>BENCH TOP</b>	Stone
<b>JOINERY UNITS</b>	Timber veneer laminate
<b>CEILINGS</b>	Painted plasterboard
<b>FLOORING</b>	Timber flooring

## BEDROOMS

<b>FLOORING</b>	Plush carpet
<b>WALLS &amp; CEILINGS</b>	Painted plasterboard
<b>SKIRTINGS &amp; ARCHITRAVES</b>	Painted timber skirtings and architraves
<b>LIGHTING</b>	Selected low voltage recessed downlights
<b>MASTER ROBES</b>	Mirrored robes
<b>ROBES (OTHER)</b>	Mirrored robes

## BATHROOM

<b>BASIN</b>	Solid surface basin
<b>BASIN MIXER</b>	Rose Gold Mixer
<b>VANITY CABINETS</b>	Mirror overhead cabinet
<b>JOINERY VANITY</b>	Custom design piece with LED strip lighting
<b>TOILET SUITE</b>	Freestanding white ceramic
<b>MASTER ENSUITE</b>	Wall mounted shower head (rose gold finish)
<b>BATHROOM (OTHER)</b>	Wall mounted shower head (rose gold finish)
<b>SHOWER SCREEN</b>	Semi frameless shower screen to 2100mm
<b>MIRROR</b>	Overhead cabinet mirror
<b>FLOOR &amp; WALL TILE</b>	FV tile to shower recess and vanity wall to shower screen height
<b>CEILINGS</b>	Painted plasterboard
<b>ADDITIONAL</b>	Toilet roll holder and towel rail Washing machine taps

## GENERAL

<b>WINDOWS</b>	Double glazed
<b>BALCONY</b>	Double sliding doors
<b>TERRACES &amp; BALCONIES</b>	Tile or screed
<b>SECURITY</b>	Audio and video intercom
<b>HEATING &amp; COOLING</b>	Reverse cycle heating and cooling To bedrooms and living zones Condenser unit located on balcony (to most)
<b>CARPARK</b>	Secure garage with internal access

# FLATIRON

FORTITUDE VALLEY  
BRISBANE

GURNER™

# .11

## 1 BEDROOM / 1 BATHROOM PLUS STUDY

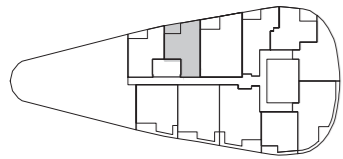
<b>TOTAL APARTMENT AREA</b>	<b>54m<sup>2</sup></b>	<b>581ft<sup>2</sup></b>
INTERNAL AREA	49m <sup>2</sup>	527ft <sup>2</sup>
BALCONY	5m <sup>2</sup>	54ft <sup>2</sup>

Scale: Not to scale. All dimensions are approximate.

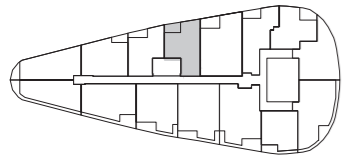
Floorboard upgrade shown.

<sup>1</sup> External balcony.

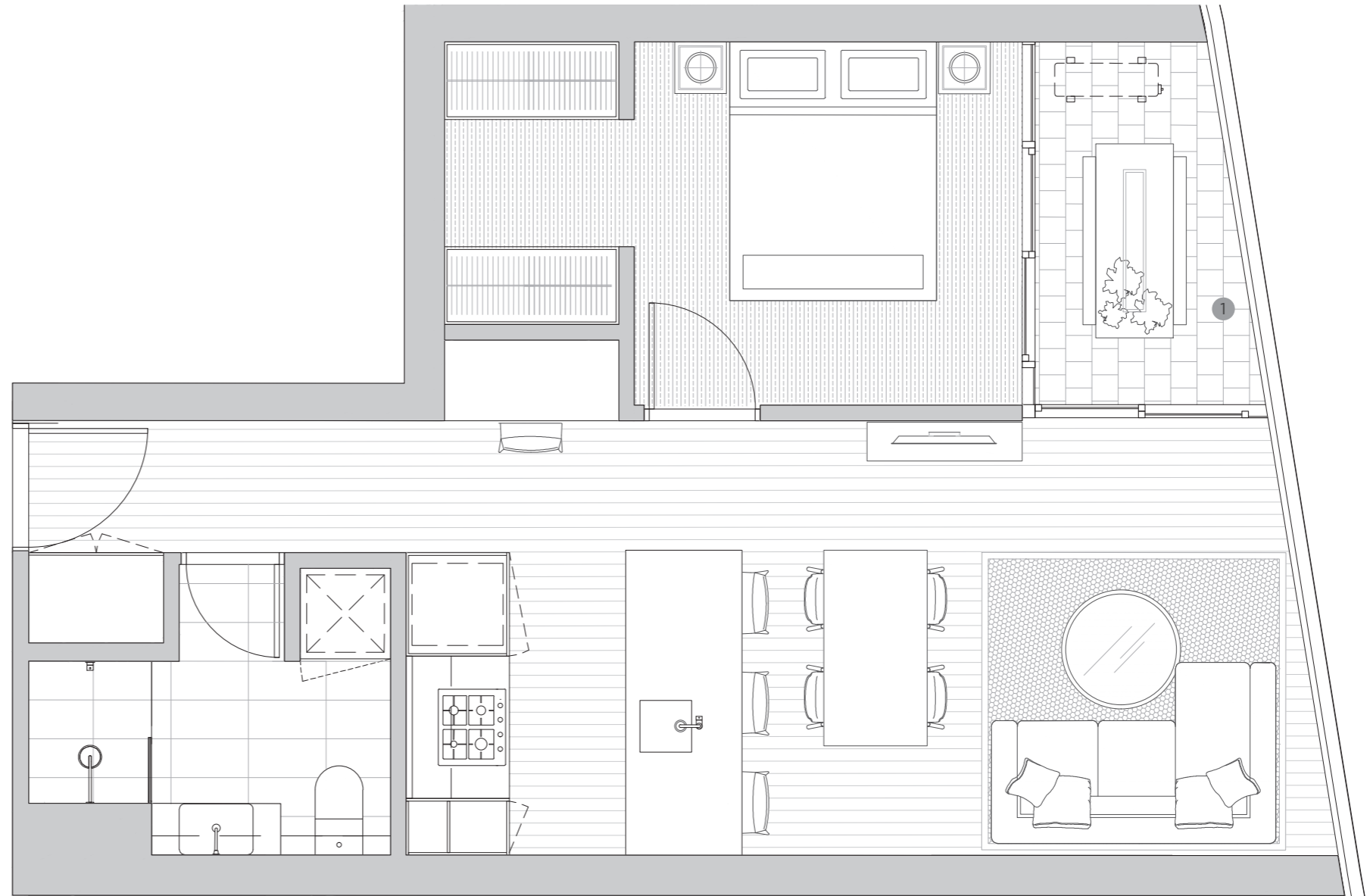
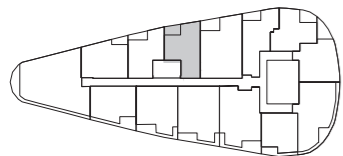
### LEVEL 7



### LEVEL 8-28



### LEVEL 29-30



## GURNER™

**DISCLAIMER**  
Any dimensions, layout, design features, views, areas, photographs and artist's impressions are for presentation purposes and indicative only. They are also subject to change in accordance with the contract of sale. Furniture and whitegoods are not included in the price. Floorboard upgrade shown. Any dimensions or areas may differ from surveyed areas due to the different methods of measurement. Final product may differ from that described. Purchasers should check the plans and specifications included in the terms of the contract of sale carefully prior to signing the contract.

# NATURAL/WARM COLOUR PALETTE

# FV COLOUR PALETTE (UPGRADE)

# APARTMENTS .12

## KITCHEN/LIVING

<b>SINK</b>	Above mount stainless steel
<b>SINK MIXER</b>	Mixer tap
<b>COOK TOP</b>	60cm stainless steel (gas)
<b>OVEN</b>	60cm stainless steel oven
<b>RANGEHOOD</b>	60cm stainless steel rangehood
<b>DISHWASHER</b>	Stainless steel dishwasher
<b>SPLASHBACK</b>	Reconstituted stone natural/warm
<b>BENCH TOP</b>	Reconstituted stone natural/warm
<b>JOINERY UNITS</b>	2-Pac
<b>CEILINGS</b>	Painted plasterboard
<b>FLOORING</b>	Selected tile natural/warm
<b>LIGHTING</b>	5-star ESD recessed downlights

## BEDROOMS

<b>FLOORING</b>	Carpet natural/warm
<b>WALLS &amp; CEILINGS</b>	Painted plasterboard
<b>SKIRTINGS &amp; ARCHITRAVES</b>	Painted timber skirtings and architraves
<b>LIGHTING</b>	Selected 5-star recessed downlights
<b>ROBES</b>	Mirrored robes

## BATHROOM

<b>BASIN</b>	Solid surface basin
<b>BASIN MIXER</b>	Single mixer
<b>VANITY CABINETS</b>	Mirror overhead cabinet
<b>JOINERY VANITY</b>	Custom made piece
<b>TOILET SUITE</b>	Freestanding white ceramic
<b>MASTER ENSUITE</b>	Wall mounted shower head
<b>BATHROOM (OTHER)</b>	Wall mounted shower head
<b>SHOWER SCREEN</b>	Semi frameless shower screen to 2100mm
<b>MIRROR</b>	Overhead cabinet mirror
<b>FLOOR &amp; WALL TILE</b>	Natural/warm tile to shower recess and vanity wall to shower screen height
<b>CEILINGS</b>	Painted plasterboard
<b>ADDITIONALS</b>	Toilet roll holder and towel rail Washing machine taps

## GENERAL

<b>WINDOWS</b>	Double glazed
<b>BALCONY</b>	Double sliding doors
<b>TERRACES &amp; BALCONIES</b>	Tile or screed
<b>SECURITY</b>	Audio and video intercom
<b>HEATING &amp; COOLING</b>	Reverse cycle heating and cooling To bedrooms and living zones Condenser unit located on balcony (to most)
<b>CARPARK</b>	Secure garage with internal access

## OPTIONAL UPGRADES

<b>OVEN AND COOK TOP</b>	Miele appliances
<b>DISHWASHER</b>	Miele integrated dishwasher
<b>TAPWARE</b>	Rose Gold
<b>KITCHEN JOINERY</b>	Soft close kitchen joinery LED strip lighting
<b>WINDOW FURNISHINGS</b>	Blinds to bedrooms and living
<b>STORAGE</b>	Oven bonnet storage cage
<b>BATHROOM</b>	LED strip lighting Full height tile
<b>LIVING/KITCHEN FLOOR</b>	Floorboards

## KITCHEN/LIVING

<b>SINK</b>	Undermount stainless steel
<b>SINK MIXER</b>	Rosegold mixer tap
<b>COOK TOP</b>	60cm Miele gas cooktop
<b>OVEN</b>	60cm Miele oven
<b>RANGEHOOD</b>	60cm Miele rangehood
<b>DISHWASHER</b>	Miele integrated dishwasher
<b>SPLASHBACK</b>	Stone with LED strip lighting
<b>BENCH TOP</b>	Stone
<b>JOINERY UNITS</b>	Timber veneer laminate
<b>CEILINGS</b>	Painted plasterboard
<b>FLOORING</b>	Timber flooring

## BEDROOMS

<b>FLOORING</b>	Plush carpet
<b>WALLS &amp; CEILINGS</b>	Painted plasterboard
<b>SKIRTINGS &amp; ARCHITRAVES</b>	Painted timber skirtings and architraves
<b>LIGHTING</b>	Selected low voltage recessed downlights
<b>MASTER ROBES</b>	Mirrored robes
<b>ROBES (OTHER)</b>	Mirrored robes

## BATHROOM

<b>BASIN</b>	Solid surface basin
<b>BASIN MIXER</b>	Rose Gold Mixer
<b>VANITY CABINETS</b>	Mirror overhead cabinet
<b>JOINERY VANITY</b>	Custom design piece with LED strip lighting
<b>TOILET SUITE</b>	Freestanding white ceramic
<b>MASTER ENSUITE</b>	Wall mounted shower head (rose gold finish)
<b>BATHROOM (OTHER)</b>	Wall mounted shower head (rose gold finish)
<b>SHOWER SCREEN</b>	Semi frameless shower screen to 2100mm
<b>MIRROR</b>	Overhead cabinet mirror
<b>FLOOR &amp; WALL TILE</b>	FV tile to shower recess and vanity wall to shower screen height
<b>CEILINGS</b>	Painted plasterboard
<b>ADDITIONAL</b>	Toilet roll holder and towel rail Washing machine taps

## GENERAL

<b>WINDOWS</b>	Double glazed
<b>BALCONY</b>	Double sliding doors
<b>TERRACES &amp; BALCONIES</b>	Tile or screed
<b>SECURITY</b>	Audio and video intercom
<b>HEATING &amp; COOLING</b>	Reverse cycle heating and cooling To bedrooms and living zones Condenser unit located on balcony (to most)
<b>CARPARK</b>	Secure garage with internal access

# FLATIRON

FORTITUDE VALLEY  
BRISBANE

GURNER™

# .12

## 2 BEDROOM / 2 BATHROOM

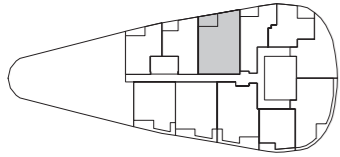
<b>TOTAL APARTMENT AREA</b>	<b>82m<sup>2</sup></b>	<b>883ft<sup>2</sup></b>
INTERNAL AREA	75m <sup>2</sup>	807ft <sup>2</sup>
BALCONY	7m <sup>2</sup>	75ft <sup>2</sup>

Scale: Not to scale. All dimensions are approximate.

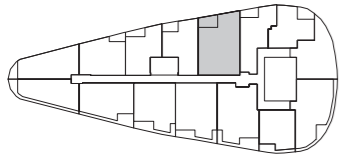
Floorboard upgrade shown.

<sup>1</sup> External balcony.

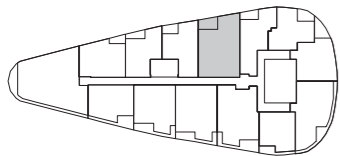
### LEVEL 7



### LEVEL 8-28

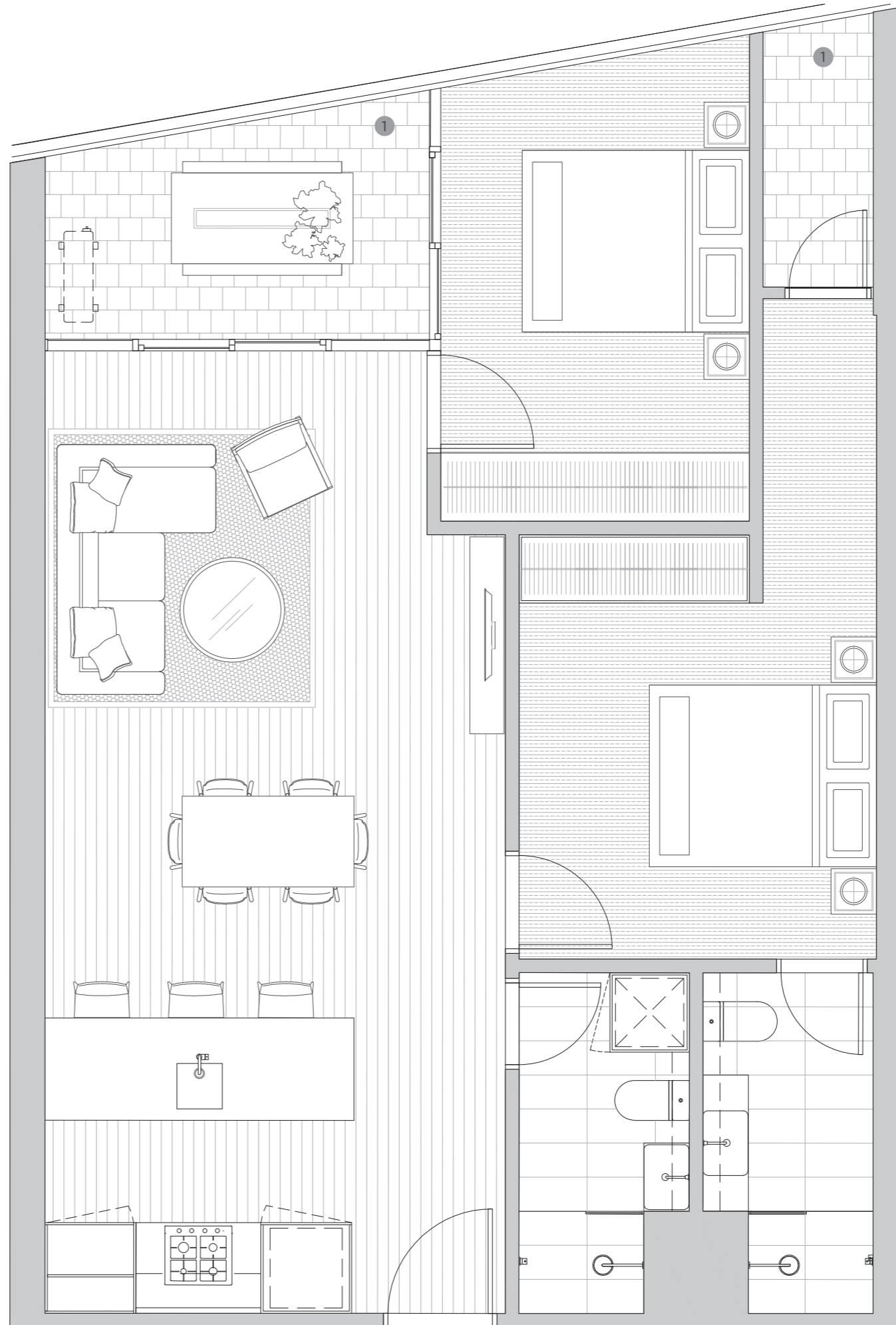


### LEVEL 29-30



## GURNER™

**DISCLAIMER**  
Any dimensions, layout, design features, views, areas, photographs and artist's impressions are for presentation purposes and indicative only. They are also subject to change in accordance with the contract of sale. Furniture and whitegoods are not included in the price. Floorboard upgrade shown. Any dimensions or areas may differ from surveyed areas due to the different methods of measurement. Final product may differ from that described. Purchasers should check the plans and specifications included in the terms of the contract of sale carefully prior to signing the contract.





# NATURAL/WARM COLOUR PALETTE

# FV COLOUR PALETTE (UPGRADE)

# APARTMENTS .13

## KITCHEN/LIVING

<b>SINK</b>	Above mount stainless steel
<b>SINK MIXER</b>	Mixer tap
<b>COOK TOP</b>	60cm stainless steel (gas)
<b>OVEN</b>	60cm stainless steel oven
<b>RANGEHOOD</b>	60cm stainless steel rangehood
<b>DISHWASHER</b>	Stainless steel dishwasher
<b>SPLASHBACK</b>	Reconstituted stone natural/warm
<b>BENCH TOP</b>	Reconstituted stone natural/warm
<b>JOINERY UNITS</b>	2-Pac
<b>CEILINGS</b>	Painted plasterboard
<b>FLOORING</b>	Selected tile natural/warm
<b>LIGHTING</b>	5-star ESD recessed downlights

## BEDROOMS

<b>FLOORING</b>	Carpet natural/warm
<b>WALLS &amp; CEILINGS</b>	Painted plasterboard
<b>SKIRTINGS &amp; ARCHITRAVES</b>	Painted timber skirtings and architraves
<b>LIGHTING</b>	Selected 5-star recessed downlights
<b>ROBES</b>	Mirrored robes

## BATHROOM

<b>BASIN</b>	Solid surface basin
<b>BASIN MIXER</b>	Single mixer
<b>VANITY CABINETS</b>	Mirror overhead cabinet
<b>JOINERY VANITY</b>	Custom made piece
<b>TOILET SUITE</b>	Freestanding white ceramic
<b>MASTER ENSUITE</b>	Wall mounted shower head
<b>BATHROOM (OTHER)</b>	Wall mounted shower head
<b>SHOWER SCREEN</b>	Semi frameless shower screen to 2100mm
<b>MIRROR</b>	Overhead cabinet mirror
<b>FLOOR &amp; WALL TILE</b>	Natural/warm tile to shower recess and vanity wall to shower screen height
<b>CEILINGS</b>	Painted plasterboard
<b>ADDITIONALS</b>	Toilet roll holder and towel rail Washing machine taps

## GENERAL

<b>WINDOWS</b>	Double glazed
<b>BALCONY</b>	Double sliding doors
<b>TERRACES &amp; BALCONIES</b>	Tile or screed
<b>SECURITY</b>	Audio and video intercom
<b>HEATING &amp; COOLING</b>	Reverse cycle heating and cooling To bedrooms and living zones Condenser unit located on balcony (to most)
<b>CARPARK</b>	Secure garage with internal access

## OPTIONAL UPGRADES

<b>OVEN AND COOK TOP</b>	Miele appliances
<b>DISHWASHER</b>	Miele integrated dishwasher
<b>TAPWARE</b>	Rose Gold
<b>KITCHEN JOINERY</b>	Soft close kitchen joinery LED strip lighting
<b>WINDOW FURNISHINGS</b>	Blinds to bedrooms and living
<b>STORAGE</b>	Oven bonnet storage cage
<b>BATHROOM</b>	LED strip lighting Full height tile
<b>LIVING/KITCHEN FLOOR</b>	Floorboards

## KITCHEN/LIVING

<b>SINK</b>	Undermount stainless steel
<b>SINK MIXER</b>	Rosegold mixer tap
<b>COOK TOP</b>	60cm Miele gas cooktop
<b>OVEN</b>	60cm Miele oven
<b>RANGEHOOD</b>	60cm Miele rangehood
<b>DISHWASHER</b>	Miele integrated dishwasher
<b>SPLASHBACK</b>	Stone with LED strip lighting
<b>BENCH TOP</b>	Stone
<b>JOINERY UNITS</b>	Timber veneer laminate
<b>CEILINGS</b>	Painted plasterboard
<b>FLOORING</b>	Timber flooring

## BEDROOMS

<b>FLOORING</b>	Plush carpet
<b>WALLS &amp; CEILINGS</b>	Painted plasterboard
<b>SKIRTINGS &amp; ARCHITRAVES</b>	Painted timber skirtings and architraves
<b>LIGHTING</b>	Selected low voltage recessed downlights
<b>MASTER ROBES</b>	Mirrored robes
<b>ROBES (OTHER)</b>	Mirrored robes

## BATHROOM

<b>BASIN</b>	Solid surface basin
<b>BASIN MIXER</b>	Rose Gold Mixer
<b>VANITY CABINETS</b>	Mirror overhead cabinet
<b>JOINERY VANITY</b>	Custom design piece with LED strip lighting
<b>TOILET SUITE</b>	Freestanding white ceramic
<b>MASTER ENSUITE</b>	Wall mounted shower head (rose gold finish)
<b>BATHROOM (OTHER)</b>	Wall mounted shower head (rose gold finish)
<b>SHOWER SCREEN</b>	Semi frameless shower screen to 2100mm
<b>MIRROR</b>	Overhead cabinet mirror
<b>FLOOR &amp; WALL TILE</b>	FV tile to shower recess and vanity wall to shower screen height
<b>CEILINGS</b>	Painted plasterboard
<b>ADDITIONAL</b>	Toilet roll holder and towel rail Washing machine taps

## GENERAL

<b>WINDOWS</b>	Double glazed
<b>BALCONY</b>	Double sliding doors
<b>TERRACES &amp; BALCONIES</b>	Tile or screed
<b>SECURITY</b>	Audio and video intercom
<b>HEATING &amp; COOLING</b>	Reverse cycle heating and cooling To bedrooms and living zones Condenser unit located on balcony (to most)
<b>CARPARK</b>	Secure garage with internal access

# FLATIRON

FORTITUDE VALLEY  
BRISBANE

GURNER™

# .13

## 1 BEDROOM / 1 BATHROOM PLUS STUDY

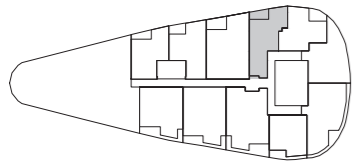
<b>TOTAL APARTMENT AREA</b>	<b>55m<sup>2</sup></b>	<b>592ft<sup>2</sup></b>
INTERNAL AREA	50m <sup>2</sup>	538ft <sup>2</sup>
BALCONY	5m <sup>2</sup>	54ft <sup>2</sup>

Scale: Not to scale. All dimensions are approximate.

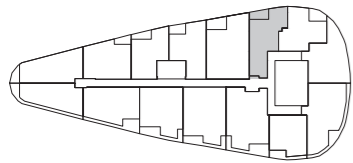
Floorboard upgrade shown.

<sup>1</sup> External balcony.

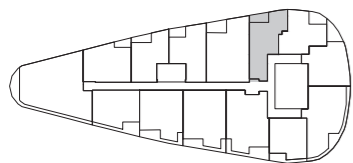
### LEVEL 7



### LEVEL 8-28

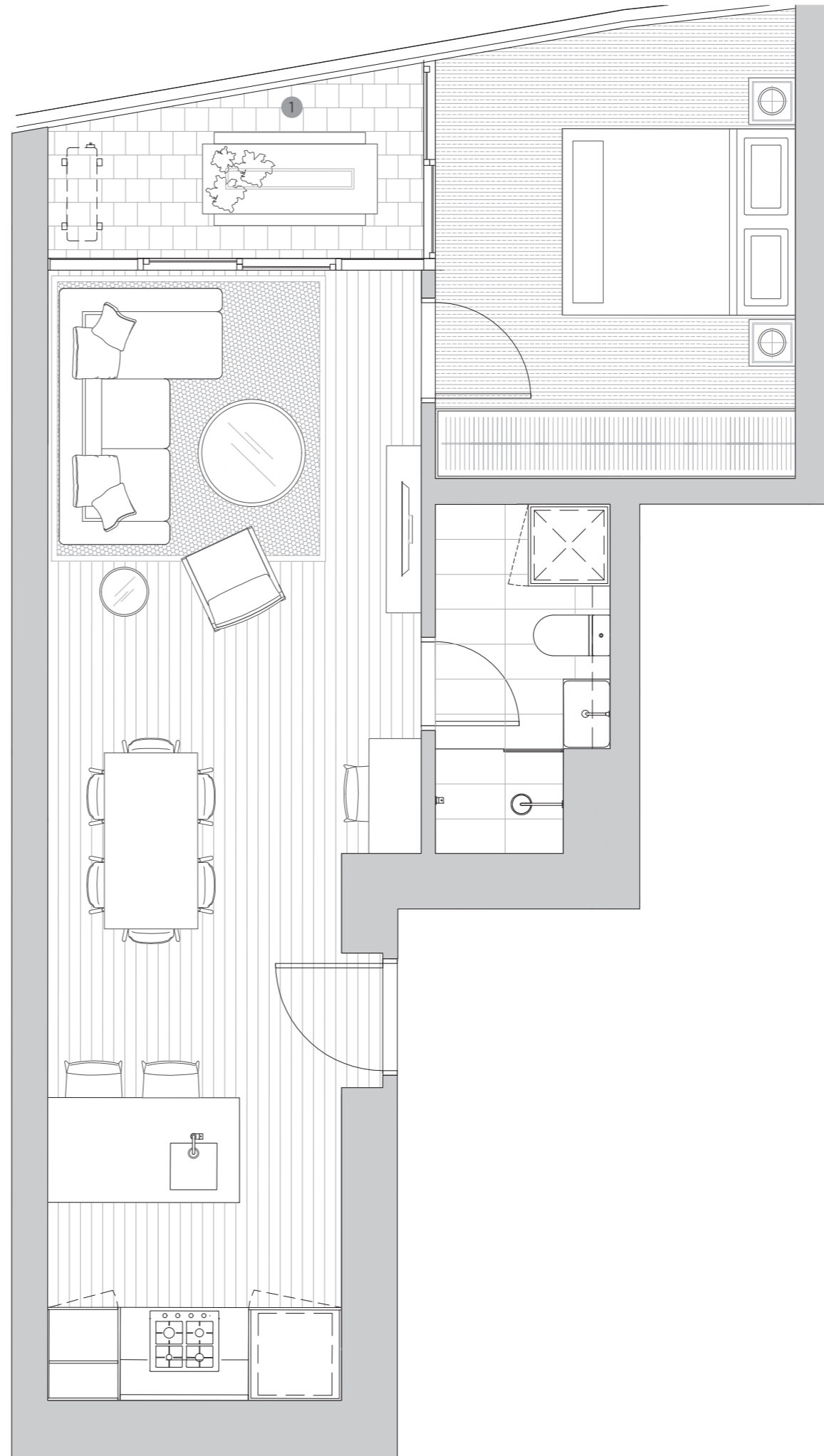


### LEVEL 29-30



## GURNER™

**DISCLAIMER**  
Any dimensions, layout, design features, views, areas, photographs and artist's impressions are for presentation purposes and indicative only. They are also subject to change in accordance with the contract of sale. Furniture and whitegoods are not included in the price. Floorboard upgrade shown. Any dimensions or areas may differ from surveyed areas due to the different methods of measurement. Final product may differ from that described. Purchasers should check the plans and specifications included in the terms of the contract of sale carefully prior to signing the contract.



# NATURAL/WARM COLOUR PALETTE

# FV COLOUR PALETTE (UPGRADE)

# APARTMENTS .14

## KITCHEN/LIVING

<b>SINK</b>	Above mount stainless steel
<b>SINK MIXER</b>	Mixer tap
<b>COOK TOP</b>	60cm stainless steel (gas)
<b>OVEN</b>	60cm stainless steel oven
<b>RANGEHOOD</b>	60cm stainless steel rangehood
<b>DISHWASHER</b>	Stainless steel dishwasher
<b>SPLASHBACK</b>	Reconstituted stone natural/warm
<b>BENCH TOP</b>	Reconstituted stone natural/warm
<b>JOINERY UNITS</b>	2-Pac
<b>CEILINGS</b>	Painted plasterboard
<b>FLOORING</b>	Selected tile natural/warm
<b>LIGHTING</b>	5-star ESD recessed downlights

## BEDROOMS

<b>FLOORING</b>	Carpet natural/warm
<b>WALLS &amp; CEILINGS</b>	Painted plasterboard
<b>SKIRTINGS &amp; ARCHITRAVES</b>	Painted timber skirtings and architraves
<b>LIGHTING</b>	Selected 5-star recessed downlights
<b>ROBES</b>	Mirrored robes

## BATHROOM

<b>BASIN</b>	Solid surface basin
<b>BASIN MIXER</b>	Single mixer
<b>VANITY CABINETS</b>	Mirror overhead cabinet
<b>JOINERY VANITY</b>	Custom made piece
<b>TOILET SUITE</b>	Freestanding white ceramic
<b>MASTER ENSUITE</b>	Wall mounted shower head
<b>BATHROOM (OTHER)</b>	Wall mounted shower head
<b>SHOWER SCREEN</b>	Semi frameless shower screen to 2100mm
<b>MIRROR</b>	Overhead cabinet mirror
<b>FLOOR &amp; WALL TILE</b>	Natural/warm tile to shower recess and vanity wall to shower screen height
<b>CEILINGS</b>	Painted plasterboard
<b>ADDITIONALS</b>	Toilet roll holder and towel rail Washing machine taps

## GENERAL

<b>WINDOWS</b>	Double glazed
<b>BALCONY</b>	Double sliding doors
<b>TERRACES &amp; BALCONIES</b>	Tile or screed
<b>SECURITY</b>	Audio and video intercom
<b>HEATING &amp; COOLING</b>	Reverse cycle heating and cooling To bedrooms and living zones Condenser unit located on balcony (to most)
<b>CARPARK</b>	Secure garage with internal access

## OPTIONAL UPGRADES

<b>OVEN AND COOK TOP</b>	Miele appliances
<b>DISHWASHER</b>	Miele integrated dishwasher
<b>TAPWARE</b>	Rose Gold
<b>KITCHEN JOINERY</b>	Soft close kitchen joinery LED strip lighting
<b>WINDOW FURNISHINGS</b>	Blinds to bedrooms and living
<b>STORAGE</b>	Oven bonnet storage cage
<b>BATHROOM</b>	LED strip lighting Full height tile
<b>LIVING/KITCHEN FLOOR</b>	Floorboards

## KITCHEN/LIVING

<b>SINK</b>	Undermount stainless steel
<b>SINK MIXER</b>	Rosegold mixer tap
<b>COOK TOP</b>	60cm Miele gas cooktop
<b>OVEN</b>	60cm Miele oven
<b>RANGEHOOD</b>	60cm Miele rangehood
<b>DISHWASHER</b>	Miele integrated dishwasher
<b>SPLASHBACK</b>	Stone with LED strip lighting
<b>BENCH TOP</b>	Stone
<b>JOINERY UNITS</b>	Timber veneer laminate
<b>CEILINGS</b>	Painted plasterboard
<b>FLOORING</b>	Timber flooring

## BEDROOMS

<b>FLOORING</b>	Plush carpet
<b>WALLS &amp; CEILINGS</b>	Painted plasterboard
<b>SKIRTINGS &amp; ARCHITRAVES</b>	Painted timber skirtings and architraves
<b>LIGHTING</b>	Selected low voltage recessed downlights
<b>MASTER ROBES</b>	Mirrored robes
<b>ROBES (OTHER)</b>	Mirrored robes

## BATHROOM

<b>BASIN</b>	Solid surface basin
<b>BASIN MIXER</b>	Rose Gold Mixer
<b>VANITY CABINETS</b>	Mirror overhead cabinet
<b>JOINERY VANITY</b>	Custom design piece with LED strip lighting
<b>TOILET SUITE</b>	Freestanding white ceramic
<b>MASTER ENSUITE</b>	Wall mounted shower head (rose gold finish)
<b>BATHROOM (OTHER)</b>	Wall mounted shower head (rose gold finish)
<b>SHOWER SCREEN</b>	Semi frameless shower screen to 2100mm
<b>MIRROR</b>	Overhead cabinet mirror
<b>FLOOR &amp; WALL TILE</b>	FV tile to shower recess and vanity wall to shower screen height
<b>CEILINGS</b>	Painted plasterboard
<b>ADDITIONAL</b>	Toilet roll holder and towel rail Washing machine taps

## GENERAL

<b>WINDOWS</b>	Double glazed
<b>BALCONY</b>	Double sliding doors
<b>TERRACES &amp; BALCONIES</b>	Tile or screed
<b>SECURITY</b>	Audio and video intercom
<b>HEATING &amp; COOLING</b>	Reverse cycle heating and cooling To bedrooms and living zones Condenser unit located on balcony (to most)
<b>CARPARK</b>	Secure garage with internal access

# FLATIRON

FORTITUDE VALLEY  
BRISBANE

GURNER™

# .14

## 1 BEDROOM / 1 BATHROOM

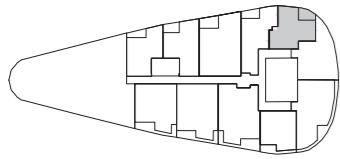
<b>TOTAL APARTMENT AREA</b>	<b>50m<sup>2</sup></b>	<b>538ft<sup>2</sup></b>
INTERNAL AREA	44m <sup>2</sup>	474ft <sup>2</sup>
BALCONY	6m <sup>2</sup>	65ft <sup>2</sup>

Scale: Not to scale. All dimensions are approximate.

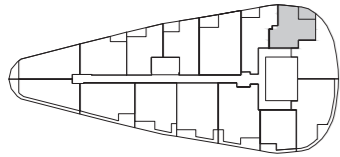
Floorboard upgrade shown.

<sup>1</sup> External balcony.

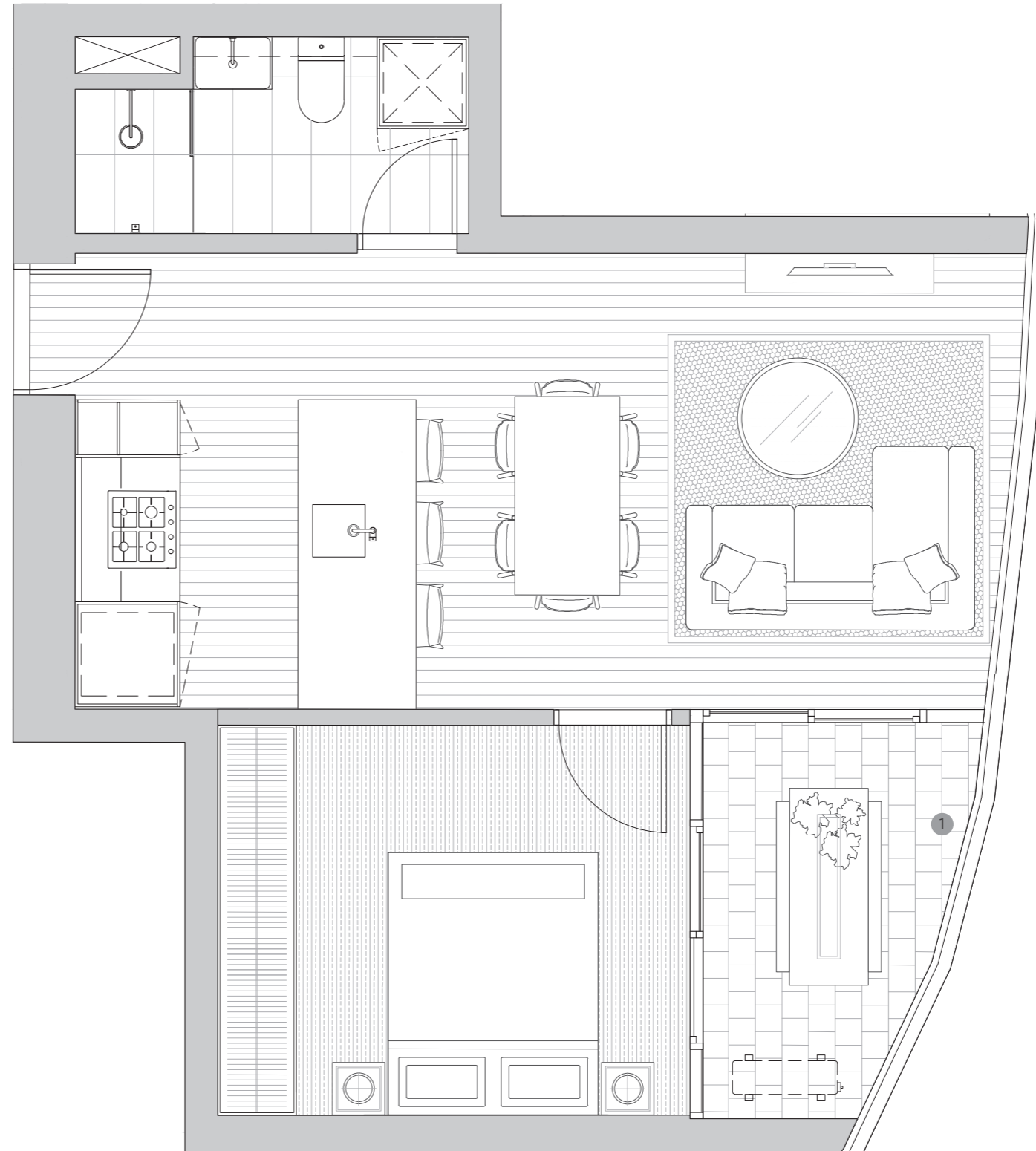
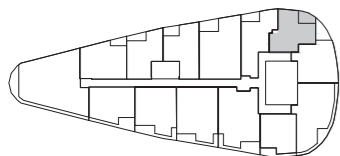
### LEVEL 7



### LEVEL 8-28



### LEVEL 29-30



## GURNER™

**DISCLAIMER**  
Any dimensions, layout, design features, views, areas, photographs and artist's impressions are for presentation purposes and indicative only. They are also subject to change in accordance with the contract of sale. Furniture and whitegoods are not included in the price. Floorboard upgrade shown. Any dimensions or areas may differ from surveyed areas due to the different methods of measurement. Final product may differ from that described. Purchasers should check the plans and specifications included in the terms of the contract of sale carefully prior to signing the contract.

# NATURAL/WARM COLOUR PALETTE

# FV COLOUR PALETTE (UPGRADE)

# APARTMENTS .15

## KITCHEN/LIVING

<b>SINK</b>	Above mount stainless steel
<b>SINK MIXER</b>	Mixer tap
<b>COOK TOP</b>	60cm stainless steel (gas)
<b>OVEN</b>	60cm stainless steel oven
<b>RANGEHOOD</b>	60cm stainless steel rangehood
<b>DISHWASHER</b>	Stainless steel dishwasher
<b>SPLASHBACK</b>	Reconstituted stone natural/warm
<b>BENCH TOP</b>	Reconstituted stone natural/warm
<b>JOINERY UNITS</b>	2-Pac
<b>CEILINGS</b>	Painted plasterboard
<b>FLOORING</b>	Selected tile natural/warm
<b>LIGHTING</b>	5-star ESD recessed downlights

## BEDROOMS

<b>FLOORING</b>	Carpet natural/warm
<b>WALLS &amp; CEILINGS</b>	Painted plasterboard
<b>SKIRTINGS &amp; ARCHITRAVES</b>	Painted timber skirtings and architraves
<b>LIGHTING</b>	Selected 5-star recessed downlights
<b>ROBES</b>	Mirrored robes

## BATHROOM

<b>BASIN</b>	Solid surface basin
<b>BASIN MIXER</b>	Single mixer
<b>VANITY CABINETS</b>	Mirror overhead cabinet
<b>JOINERY VANITY</b>	Custom made piece
<b>TOILET SUITE</b>	Freestanding white ceramic
<b>MASTER ENSUITE</b>	Wall mounted shower head
<b>BATHROOM (OTHER)</b>	Wall mounted shower head
<b>SHOWER SCREEN</b>	Semi frameless shower screen to 2100mm
<b>MIRROR</b>	Overhead cabinet mirror
<b>FLOOR &amp; WALL TILE</b>	Natural/warm tile to shower recess and vanity wall to shower screen height
<b>CEILINGS</b>	Painted plasterboard
<b>ADDITIONALS</b>	Toilet roll holder and towel rail Washing machine taps

## GENERAL

<b>WINDOWS</b>	Double glazed
<b>BALCONY</b>	Double sliding doors
<b>TERRACES &amp; BALCONIES</b>	Tile or screed
<b>SECURITY</b>	Audio and video intercom
<b>HEATING &amp; COOLING</b>	Reverse cycle heating and cooling To bedrooms and living zones Condenser unit located on balcony (to most)
<b>CARPARK</b>	Secure garage with internal access

## OPTIONAL UPGRADES

<b>OVEN AND COOK TOP</b>	Miele appliances
<b>DISHWASHER</b>	Miele integrated dishwasher
<b>TAPWARE</b>	Rose Gold
<b>KITCHEN JOINERY</b>	Soft close kitchen joinery LED strip lighting
<b>WINDOW FURNISHINGS</b>	Blinds to bedrooms and living
<b>STORAGE</b>	Oven bonnet storage cage
<b>BATHROOM</b>	LED strip lighting Full height tile
<b>LIVING/KITCHEN FLOOR</b>	Floorboards

## KITCHEN/LIVING

<b>SINK</b>	Undermount stainless steel
<b>SINK MIXER</b>	Rosegold mixer tap
<b>COOK TOP</b>	60cm Miele gas cooktop
<b>OVEN</b>	60cm Miele oven
<b>RANGEHOOD</b>	60cm Miele rangehood
<b>DISHWASHER</b>	Miele integrated dishwasher
<b>SPLASHBACK</b>	Stone with LED strip lighting
<b>BENCH TOP</b>	Stone
<b>JOINERY UNITS</b>	Timber veneer laminate
<b>CEILINGS</b>	Painted plasterboard
<b>FLOORING</b>	Timber flooring

## BEDROOMS

<b>FLOORING</b>	Plush carpet
<b>WALLS &amp; CEILINGS</b>	Painted plasterboard
<b>SKIRTINGS &amp; ARCHITRAVES</b>	Painted timber skirtings and architraves
<b>LIGHTING</b>	Selected low voltage recessed downlights
<b>MASTER ROBES</b>	Mirrored robes
<b>ROBES (OTHER)</b>	Mirrored robes

## BATHROOM

<b>BASIN</b>	Solid surface basin
<b>BASIN MIXER</b>	Rose Gold Mixer
<b>VANITY CABINETS</b>	Mirror overhead cabinet
<b>JOINERY VANITY</b>	Custom design piece with LED strip lighting
<b>TOILET SUITE</b>	Freestanding white ceramic
<b>MASTER ENSUITE</b>	Wall mounted shower head (rose gold finish)
<b>BATHROOM (OTHER)</b>	Wall mounted shower head (rose gold finish)
<b>SHOWER SCREEN</b>	Semi frameless shower screen to 2100mm
<b>MIRROR</b>	Overhead cabinet mirror
<b>FLOOR &amp; WALL TILE</b>	FV tile to shower recess and vanity wall to shower screen height
<b>CEILINGS</b>	Painted plasterboard
<b>ADDITIONAL</b>	Toilet roll holder and towel rail Washing machine taps

## GENERAL

<b>WINDOWS</b>	Double glazed
<b>BALCONY</b>	Double sliding doors
<b>TERRACES &amp; BALCONIES</b>	Tile or screed
<b>SECURITY</b>	Audio and video intercom
<b>HEATING &amp; COOLING</b>	Reverse cycle heating and cooling To bedrooms and living zones Condenser unit located on balcony (to most)
<b>CARPARK</b>	Secure garage with internal access

# FLATIRON

FORTITUDE VALLEY  
BRISBANE

GURNER™

# .15

## 2 BEDROOM / 1 BATHROOM PLUS STUDY

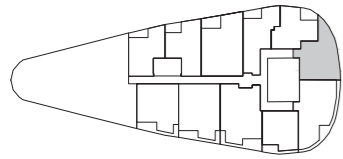
<b>TOTAL APARTMENT AREA</b>	<b>67m<sup>2</sup></b>	<b>721ft<sup>2</sup></b>
INTERNAL AREA	61m <sup>2</sup>	657ft <sup>2</sup>
BALCONY	6m <sup>2</sup>	65ft <sup>2</sup>

Scale: Not to scale. All dimensions are approximate.

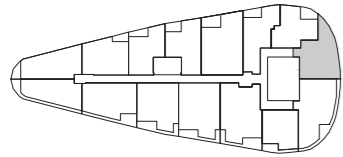
Floorboard upgrade shown.

<sup>1</sup> External balcony.

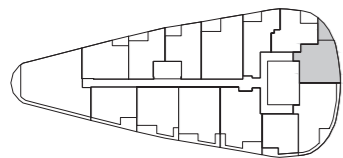
### LEVEL 7



### LEVEL 8-28

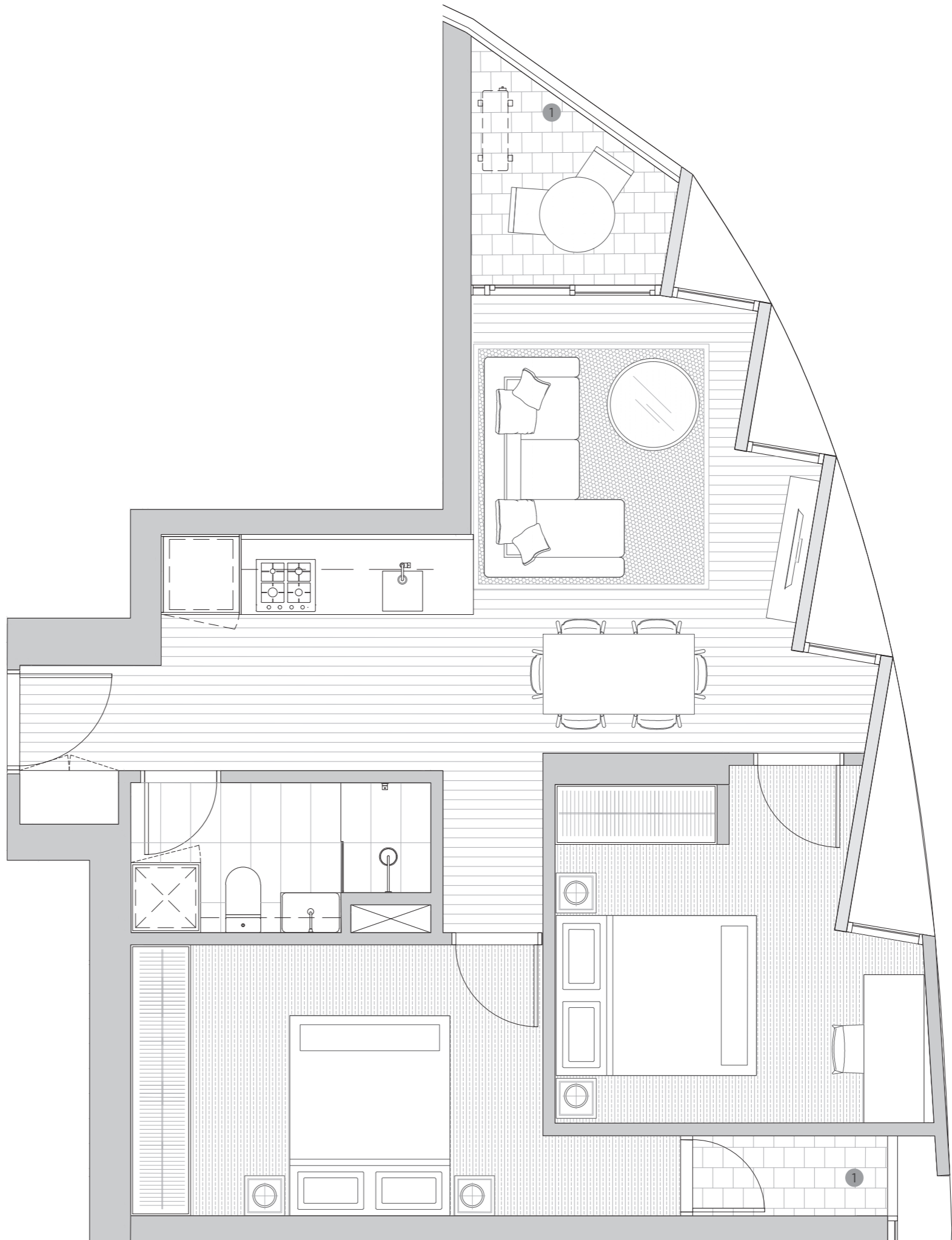


### LEVEL 29-30



## GURNER™

**DISCLAIMER**  
Any dimensions, layout, design features, views, areas, photographs and artist's impressions are for presentation purposes and indicative only. They are also subject to change in accordance with the contract of sale. Furniture and whitegoods are not included in the price. Floorboard upgrade shown. Any dimensions or areas may differ from surveyed areas due to the different methods of measurement. Final product may differ from that described. Purchasers should check the plans and specifications included in the terms of the contract of sale carefully prior to signing the contract.



# NATURAL/WARM COLOUR PALETTE

# FV COLOUR PALETTE (UPGRADE)

# APARTMENTS .16

## KITCHEN/LIVING

<b>SINK</b>	Above mount stainless steel
<b>SINK MIXER</b>	Mixer tap
<b>COOK TOP</b>	60cm stainless steel (gas)
<b>OVEN</b>	60cm stainless steel oven
<b>RANGEHOOD</b>	60cm stainless steel rangehood
<b>DISHWASHER</b>	Stainless steel dishwasher
<b>SPLASHBACK</b>	Reconstituted stone natural/warm
<b>BENCH TOP</b>	Reconstituted stone natural/warm
<b>JOINERY UNITS</b>	2-Pac
<b>CEILINGS</b>	Painted plasterboard
<b>FLOORING</b>	Selected tile natural/warm
<b>LIGHTING</b>	5-star ESD recessed downlights

## BEDROOMS

<b>FLOORING</b>	Carpet natural/warm
<b>WALLS &amp; CEILINGS</b>	Painted plasterboard
<b>SKIRTINGS &amp; ARCHITRAVES</b>	Painted timber skirtings and architraves
<b>LIGHTING</b>	Selected 5-star recessed downlights
<b>ROBES</b>	Mirrored robes

## BATHROOM

<b>BASIN</b>	Solid surface basin
<b>BASIN MIXER</b>	Single mixer
<b>VANITY CABINETS</b>	Mirror overhead cabinet
<b>JOINERY VANITY</b>	Custom made piece
<b>TOILET SUITE</b>	Freestanding white ceramic
<b>MASTER ENSUITE</b>	Wall mounted shower head
<b>BATHROOM (OTHER)</b>	Wall mounted shower head
<b>SHOWER SCREEN</b>	Semi frameless shower screen to 2100mm
<b>MIRROR</b>	Overhead cabinet mirror
<b>FLOOR &amp; WALL TILE</b>	Natural/warm tile to shower recess and vanity wall to shower screen height
<b>CEILINGS</b>	Painted plasterboard
<b>ADDITIONALS</b>	Toilet roll holder and towel rail Washing machine taps

## GENERAL

<b>WINDOWS</b>	Double glazed
<b>BALCONY</b>	Double sliding doors
<b>TERRACES &amp; BALCONIES</b>	Tile or screed
<b>SECURITY</b>	Audio and video intercom
<b>HEATING &amp; COOLING</b>	Reverse cycle heating and cooling To bedrooms and living zones Condenser unit located on balcony (to most)
<b>CARPARK</b>	Secure garage with internal access

## OPTIONAL UPGRADES

<b>OVEN AND COOK TOP</b>	Miele appliances
<b>DISHWASHER</b>	Miele integrated dishwasher
<b>TAPWARE</b>	Rose Gold
<b>KITCHEN JOINERY</b>	Soft close kitchen joinery LED strip lighting
<b>WINDOW FURNISHINGS</b>	Blinds to bedrooms and living
<b>STORAGE</b>	Oven bonnet storage cage
<b>BATHROOM</b>	LED strip lighting Full height tile
<b>LIVING/KITCHEN FLOOR</b>	Floorboards

## KITCHEN/LIVING

<b>SINK</b>	Undermount stainless steel
<b>SINK MIXER</b>	Rosegold mixer tap
<b>COOK TOP</b>	60cm Miele gas cooktop
<b>OVEN</b>	60cm Miele oven
<b>RANGEHOOD</b>	60cm Miele rangehood
<b>DISHWASHER</b>	Miele integrated dishwasher
<b>SPLASHBACK</b>	Stone with LED strip lighting
<b>BENCH TOP</b>	Stone
<b>JOINERY UNITS</b>	Timber veneer laminate
<b>CEILINGS</b>	Painted plasterboard
<b>FLOORING</b>	Timber flooring

## BEDROOMS

<b>FLOORING</b>	Plush carpet
<b>WALLS &amp; CEILINGS</b>	Painted plasterboard
<b>SKIRTINGS &amp; ARCHITRAVES</b>	Painted timber skirtings and architraves
<b>LIGHTING</b>	Selected low voltage recessed downlights
<b>MASTER ROBES</b>	Mirrored robes
<b>ROBES (OTHER)</b>	Mirrored robes

## BATHROOM

<b>BASIN</b>	Solid surface basin
<b>BASIN MIXER</b>	Rose Gold Mixer
<b>VANITY CABINETS</b>	Mirror overhead cabinet
<b>JOINERY VANITY</b>	Custom design piece with LED strip lighting
<b>TOILET SUITE</b>	Freestanding white ceramic
<b>MASTER ENSUITE</b>	Wall mounted shower head (rose gold finish)
<b>BATHROOM (OTHER)</b>	Wall mounted shower head (rose gold finish)
<b>SHOWER SCREEN</b>	Semi frameless shower screen to 2100mm
<b>MIRROR</b>	Overhead cabinet mirror
<b>FLOOR &amp; WALL TILE</b>	FV tile to shower recess and vanity wall to shower screen height
<b>CEILINGS</b>	Painted plasterboard
<b>ADDITIONAL</b>	Toilet roll holder and towel rail Washing machine taps

## GENERAL

<b>WINDOWS</b>	Double glazed
<b>BALCONY</b>	Double sliding doors
<b>TERRACES &amp; BALCONIES</b>	Tile or screed
<b>SECURITY</b>	Audio and video intercom
<b>HEATING &amp; COOLING</b>	Reverse cycle heating and cooling To bedrooms and living zones Condenser unit located on balcony (to most)
<b>CARPARK</b>	Secure garage with internal access

# FLATIRON

FORTITUDE VALLEY  
BRISBANE

GURNER™

# .16

## 1 BEDROOM / 1 BATHROOM

**TOTAL APARTMENT AREA**     **57m<sup>2</sup>**     **614ft<sup>2</sup>**

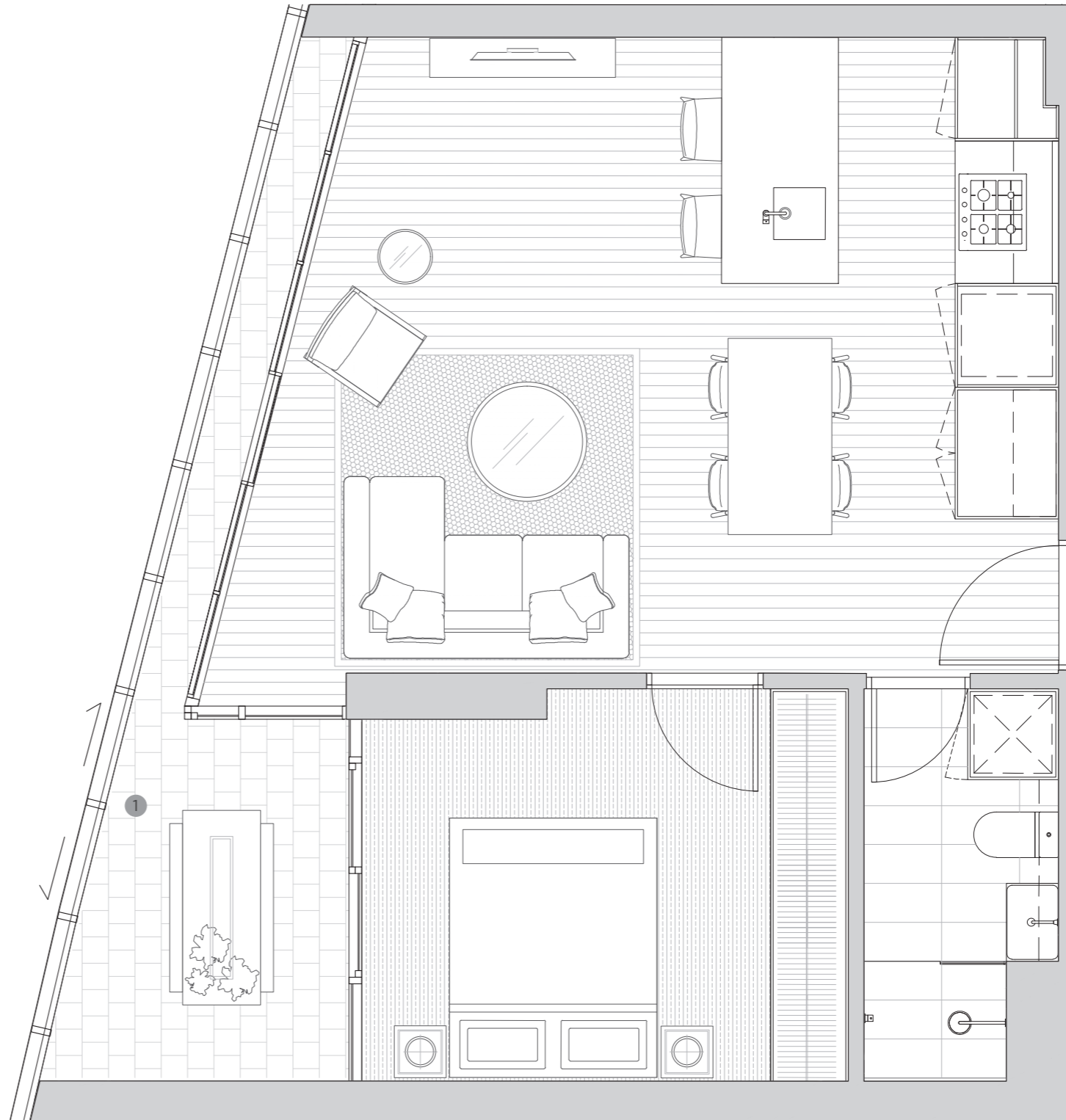
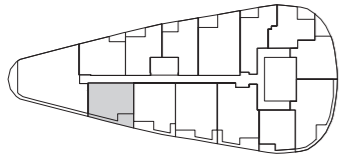
Scale: Not to scale. All dimensions are approximate.

Floorboard upgrade shown.

<sup>1</sup> Enclosed area.

∠ Sliding doors.

### LEVEL 29-30



## GURNER™

**DISCLAIMER**  
Any dimensions, layout, design features, views, areas, photographs and artist's impressions are for presentation purposes and indicative only. They are also subject to change in accordance with the contract of sale. Furniture and whitegoods are not included in the price. Floorboard upgrade shown. Any dimensions or areas may differ from surveyed areas due to the different methods of measurement. Final product may differ from that described. Purchasers should check the plans and specifications included in the terms of the contract of sale carefully prior to signing the contract.



# NATURAL/WARM COLOUR PALETTE

# FV COLOUR PALETTE (UPGRADE)

# APARTMENTS .17

## KITCHEN/LIVING

<b>SINK</b>	Above mount stainless steel
<b>SINK MIXER</b>	Mixer tap
<b>COOK TOP</b>	60cm stainless steel (gas)
<b>OVEN</b>	60cm stainless steel oven
<b>RANGEHOOD</b>	60cm stainless steel rangehood
<b>DISHWASHER</b>	Stainless steel dishwasher
<b>SPLASHBACK</b>	Reconstituted stone natural/warm
<b>BENCH TOP</b>	Reconstituted stone natural/warm
<b>JOINERY UNITS</b>	2-Pac
<b>CEILINGS</b>	Painted plasterboard
<b>FLOORING</b>	Selected tile natural/warm
<b>LIGHTING</b>	5-star ESD recessed downlights

## BEDROOMS

<b>FLOORING</b>	Carpet natural/warm
<b>WALLS &amp; CEILINGS</b>	Painted plasterboard
<b>SKIRTINGS &amp; ARCHITRAVES</b>	Painted timber skirtings and architraves
<b>LIGHTING</b>	Selected 5-star recessed downlights
<b>ROBES</b>	Mirrored robes

## BATHROOM

<b>BASIN</b>	Solid surface basin
<b>BASIN MIXER</b>	Single mixer
<b>VANITY CABINETS</b>	Mirror overhead cabinet
<b>JOINERY VANITY</b>	Custom made piece
<b>TOILET SUITE</b>	Freestanding white ceramic
<b>MASTER ENSUITE</b>	Wall mounted shower head
<b>BATHROOM (OTHER)</b>	Wall mounted shower head
<b>SHOWER SCREEN</b>	Semi frameless shower screen to 2100mm
<b>MIRROR</b>	Overhead cabinet mirror
<b>FLOOR &amp; WALL TILE</b>	Natural/warm tile to shower recess and vanity wall to shower screen height
<b>CEILINGS</b>	Painted plasterboard
<b>ADDITIONALS</b>	Toilet roll holder and towel rail Washing machine taps

## GENERAL

<b>WINDOWS</b>	Double glazed
<b>BALCONY</b>	Double sliding doors
<b>TERRACES &amp; BALCONIES</b>	Tile or screed
<b>SECURITY</b>	Audio and video intercom
<b>HEATING &amp; COOLING</b>	Reverse cycle heating and cooling To bedrooms and living zones Condenser unit located on balcony (to most)
<b>CARPARK</b>	Secure garage with internal access

## OPTIONAL UPGRADES

<b>OVEN AND COOK TOP</b>	Miele appliances
<b>DISHWASHER</b>	Miele integrated dishwasher
<b>TAPWARE</b>	Rose Gold
<b>KITCHEN JOINERY</b>	Soft close kitchen joinery LED strip lighting
<b>WINDOW FURNISHINGS</b>	Blinds to bedrooms and living
<b>STORAGE</b>	Oven bonnet storage cage
<b>BATHROOM</b>	LED strip lighting Full height tile
<b>LIVING/KITCHEN FLOOR</b>	Floorboards

## KITCHEN/LIVING

<b>SINK</b>	Undermount stainless steel
<b>SINK MIXER</b>	Rosegold mixer tap
<b>COOK TOP</b>	60cm Miele gas cooktop
<b>OVEN</b>	60cm Miele oven
<b>RANGEHOOD</b>	60cm Miele rangehood
<b>DISHWASHER</b>	Miele integrated dishwasher
<b>SPLASHBACK</b>	Stone with LED strip lighting
<b>BENCH TOP</b>	Stone
<b>JOINERY UNITS</b>	Timber veneer laminate
<b>CEILINGS</b>	Painted plasterboard
<b>FLOORING</b>	Timber flooring

## BEDROOMS

<b>FLOORING</b>	Plush carpet
<b>WALLS &amp; CEILINGS</b>	Painted plasterboard
<b>SKIRTINGS &amp; ARCHITRAVES</b>	Painted timber skirtings and architraves
<b>LIGHTING</b>	Selected low voltage recessed downlights
<b>MASTER ROBES</b>	Mirrored robes
<b>ROBES (OTHER)</b>	Mirrored robes

## BATHROOM

<b>BASIN</b>	Solid surface basin
<b>BASIN MIXER</b>	Rose Gold Mixer
<b>VANITY CABINETS</b>	Mirror overhead cabinet
<b>JOINERY VANITY</b>	Custom design piece with LED strip lighting
<b>TOILET SUITE</b>	Freestanding white ceramic
<b>MASTER ENSUITE</b>	Wall mounted shower head (rose gold finish)
<b>BATHROOM (OTHER)</b>	Wall mounted shower head (rose gold finish)
<b>SHOWER SCREEN</b>	Semi frameless shower screen to 2100mm
<b>MIRROR</b>	Overhead cabinet mirror
<b>FLOOR &amp; WALL TILE</b>	FV tile to shower recess and vanity wall to shower screen height
<b>CEILINGS</b>	Painted plasterboard
<b>ADDITIONAL</b>	Toilet roll holder and towel rail Washing machine taps

## GENERAL

<b>WINDOWS</b>	Double glazed
<b>BALCONY</b>	Double sliding doors
<b>TERRACES &amp; BALCONIES</b>	Tile or screed
<b>SECURITY</b>	Audio and video intercom
<b>HEATING &amp; COOLING</b>	Reverse cycle heating and cooling To bedrooms and living zones Condenser unit located on balcony (to most)
<b>CARPARK</b>	Secure garage with internal access

# FLATIRON

FORTITUDE VALLEY  
BRISBANE

GURNER™

## 3 BEDROOM / 2 BATHROOM PLUS STUDY

**TOTAL APARTMENT AREA**    **122m<sup>2</sup>**    **1313ft<sup>2</sup>**

INTERNAL AREA                      115m<sup>2</sup>    1238ft<sup>2</sup>

BALCONY                                7m<sup>2</sup>    75ft<sup>2</sup>

Scale: Not to scale. All dimensions are approximate.

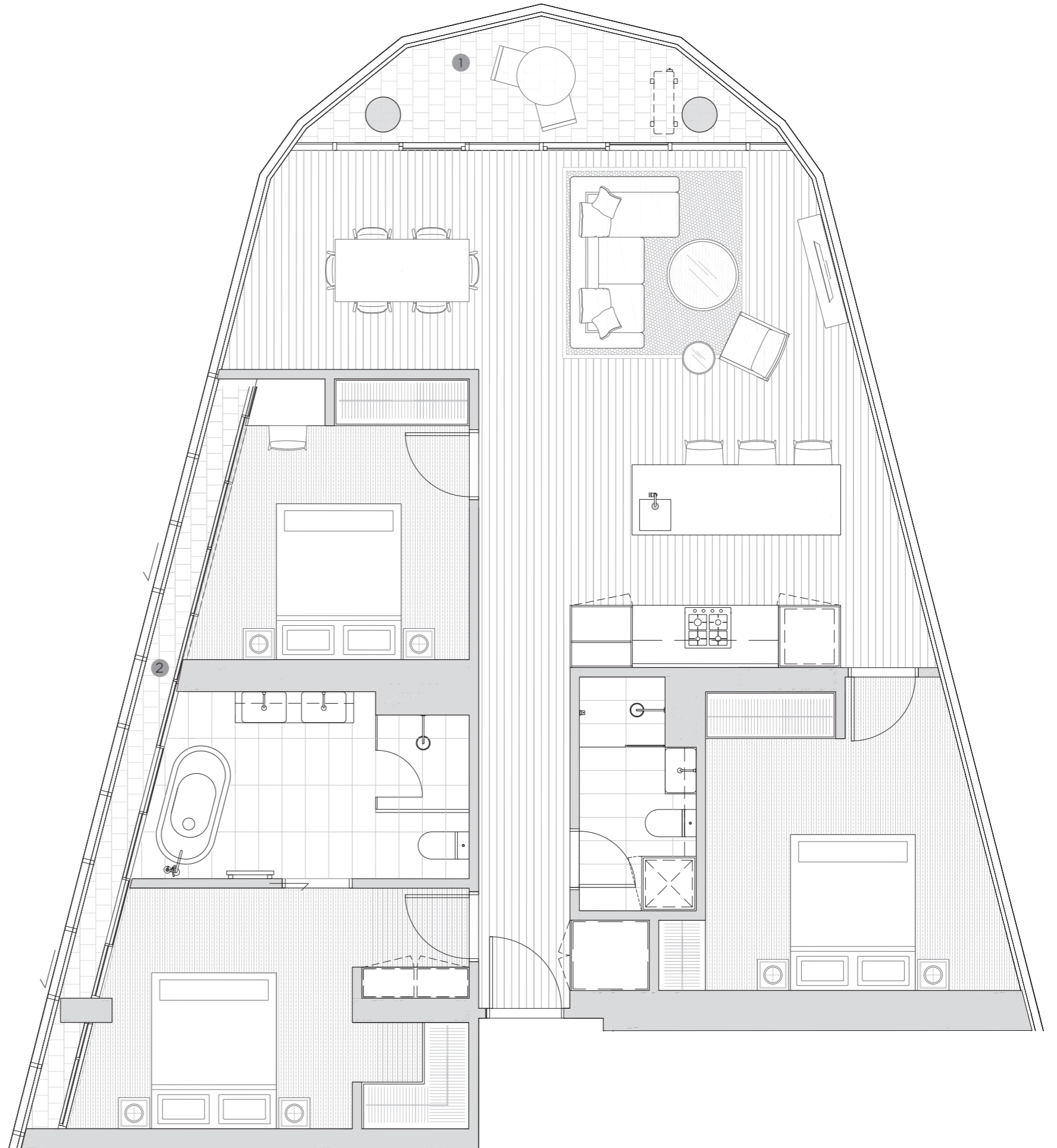
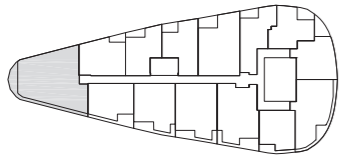
Floorboard upgrade shown.

<sup>1</sup> External balcony.

<sup>2</sup> Enclosed area.

↙ Sliding doors.

### LEVEL 29-30



**GURNER™**

**DISCLAIMER**  
Any dimensions, layout, design features, views, areas, photographs and artist's impressions are for presentation purposes and indicative only. They are also subject to change in accordance with the contract of sale. Furniture and whitegoods are not included in the price. Floorboard upgrade shown. Any dimensions or areas may differ from surveyed areas due to the different methods of measurement. Final product may differ from that described. Purchasers should check the plans and specifications included in the terms of the contract of sale carefully prior to signing the contract.